

Dec. 6, 2014 - Three Centuries of Decorative Arts 12/6/2014

LOT #

**1 VERY RARE RS PRUSSIA
PORCELAIN AND SILVER**

EPERGNE An unmarked RS Prussia porcelain rounded bowl with blown out florals and beaded folds between large petal shape lobes decorated with pink roses running alternatively with decoration of gold foliate designs. A single matching lily trumpet of the same mold and decoration mounted in the center on silverplated stand marked HC Co for Hammond, Creake & Co, 1886-1935, Sheffield England. Measures 17.5 inches high overall, with an 11.75 inch epergne lily over a 10.75 inch diameter bowl.



When Mary McCaslin pictured this, the Bailey Epergne, on the cover of her book, 'RS Prussia and More' in 2006, it was the only RS Prussia Epergne known to exist. Initially found in England, it was purchased in the 1970s by Helen Bailey of Kirksville, Missouri through an Antique Trader advertisement. After much research, the Bailey Epergne was first displayed at the RS Prussia Convention in St. Louis in 1987. At that time, in her search to understand more about the piece, Helen had amassed a number of other signed RS Prussia pieces with this same mold and decoration. Very good condition. There are no chips, cracks or repairs. Extremely minor wear to some of the thin gold decoration and some of the

LOT #

lobe tips of the bowl.
Hammer Price: 17,000.00

**2 19TH C. SULPHIDE CAMEO
PLAQUE OF WASHINGTON**

Incrusted portrait of George Washington after the medal by Duvuvier, beveled and faceted edge, cameo impressed on the back 'Washington', measures 3.25 inches. Very good.



Hammer Price: 3,400.00

**3 19TH C. SULPHIDE CAMEO
PLAQUE OF JOSEPHINE, SIGNED**

Circa 1820, signed 'Desprez Rue des Recolets No. 2 à Paris' on the back of the cameo, gilded bronze bezel, measures 3.5 inches. Some small surface scratches on the top.



Hammer Price: 850.00

**4 19TH C. SULPHIDE CAMEO
PLAQUE OF NAPOLEON, SIGNED**

Circa 1820, signed 'Desprez Rue des Recolets No. 2 à Paris' on the back of the cameo, beveled and faceted edge, measures 3.25 inches. Hairline crack in the cameo only, visible from the back.



Hammer Price: 550.00

Dec. 6, 2014 - Three Centuries of Decorative Arts 12/6/2014

LOT #**5 19TH C. SULPHIDE CAMEO
PLAQUE OF GENERAL BLÜCHER**

Incrusted portrait of Prussian General Gebhard Leberecht von Blücher (1742-1819) in a wooden frame, measures 4.5 inches. Very good.
Hammer Price: 325.00

**LOT #****9 19TH C. SULPHIDE CAMEO
PLAQUE OF MADAME DE SÉVIGNÉ**

Incrusted portrait of Madame de Sévigné (1626-1696) after a medal by Gayrard in a wood frame, frame measures 4.25 x 4 inches. Very good.
Hammer Price: 200.00

**6 19TH C. SULPHIDE CAMEO
PLAQUE OF BENJAMIN FRANKLIN**

Incrusted portrait of Benjamin Franklin, beveled and faceted edge, cameo impressed on the back 'Franklin', measures 3.25 inches. Hanger has become detached, very good overall.
Hammer Price: 3,000.00

**10 19TH C. SULPHIDE CAMEO
PLAQUE OF MARIE ANTOINETTE**

Incrusted portrait of Queen Marie Antoinette after a medal by Pierre Duvivier, cut glass back and sides in a burst pattern, measures 4 inches. Very good.
Hammer Price: 925.00

**7 19TH C. SULPHIDE CAMEO
PLAQUE PORTRAIT OF A WOMAN**

Cut glass back and sides, measures 3.5 x 2.75 inches. Very good.
Hammer Price: 600.00

**11 19TH C. SULPHIDE CAMEO
PLAQUE OF LOUIS XVI**

Incrusted portrait of King Louis the XVI after a medal by J. P. Droz, pressed glass sides, back and beveled front, measures 5 x 3.75 inches. Very good.
Hammer Price: 625.00

**8 19TH C. SULPHIDE CAMEO
PLAQUE OF LOUIS XVIII, SIGN**

Circa 1820, signed 'Desprez Rue des Recolets No. 2 à Paris' on the back of the cameo, beveled and faceted edge with a gilded bronze frame, measures 3.5 inches. Very good.
Hammer Price: 650.00

**12 19TH C. SULPHIDE CAMEO
PLAQUE OF A WOMAN**

Incrusted portrait of a woman, signed on the back but indecipherable due to the glass pattern, measures 3.5 inches. Scratches and flake on the back surface.
Hammer Price: 450.00



Dec. 6, 2014 - Three Centuries of Decorative Arts 12/6/2014

LOT #

13 19TH C. SULPHIDE CAMEO
PLAQUE OF POPE PIUS IX Incrusted
portrait of Pope Pius the IX, unsigned,
cut and beveled glass, measures 5 x 3.5
inches. Several bubble inclusions in the
glass, very good overall.
Hammer Price: 475.00

**LOT #**

17 19TH C. SULPHIDE CAMEO
PLAQUE OF A CLASSICAL FIGUR
Incrusted cameo portrait, cut glass back,
measures 4 inches. Small scratch on the
front, small spot of discoloration inside
on the cameo.
Hammer Price: 600.00



14 19TH C. SULPHIDE DOOR
PLATE OF THE VIRTUE PRUDENCE
A 'Door Plate' with an Incrusted
portrayal of the cardinal virtue 'Prudence'
holding a book and a wreath, gilded
bronze frame with hanging chain,
measures 9.75 x 3 inches. Light surface
scratch and a chip on the front, large
chip at the top near the mount.
Hammer Price: 1,600.00



18 19TH C. SULPHIDE CAMEO
PLAQUE OF JESUS Incrusted
representation of Christ with cut glass in
the style of a frame, brass hanger,
measures 6.25 x 6 inches. Some
roughness and wear where the hanger
pierces the frame, very good overall.
Hammer Price: 500.00



15 PAIR OF BACCARAT 19TH C.
SULPHIDE CAMEOS Cameos of
French writers labeled 'Racine' for Jean
Baptiste Racine (1639-1699) and
CreBillion (sic) for Claude Prosper
Jolyot de Crébillon (1707-1777), gilded
metal frames, measure 2.25 inches each.
Very good.
Hammer Price: 800.00



19 19TH C. SULPHIDE CAMEO
PLAQUE OF GEORGE III Incrusted
portrait of George III (1738-1820), King
of England dressed in the Order of the
Garter, encased in cut glass in the style
of a frame, etched back, measures 3.75 x
3.25 inches. Small edge flake on the
lower front, some frame points are
chipped on the lower left. Good overall.
Hammer Price: 900.00



16 19TH C. SULPHIDE CAMEO
PLAQUE OF THE DUKE OF YORK
Incrusted cameo portrait in a gilded
wooden frame, measures 4.75 inches.
Hammer Price: 600.00



20 19TH C. SULPHIDE CAMEO
PLAQUE OF WASHINGTON
Incrusted portrait of George Washington
after the medal by Duvuvier by Baccarat,
framed style with a cut glass back,
measures 4 x 3 inches. Some surface
scratches at the top near the hanger,



Dec. 6, 2014 - Three Centuries of Decorative Arts 12/6/2014

LOT #

good overall.

Hammer Price: 1,900.00

**21 19TH C. SULPHIDE CAMEO
PLAQUE OF GENERAL FOY**

Incrusted portrait of General Maximilien Foy (1775-1825) by Baccarat, cameo named along it's lower edge, measures 3.75 x 3 inches. Very good.

Hammer Price: 850.00

**22 19TH C. SULPHIDE CAMEO
PLAQUE OF EMPERESS MARIE LO**

Incrusted portrait of Empress Marie Louise (1791-1847), measures 4 x 3 inches. Many fine scratches on the back.

Hammer Price: 850.00

**23 19TH C. SULPHIDE CAMEO
PLAQUE OF NAPOLEON I**

Incrusted portrait of Napoleon I, signed 'Andrieu' on the lower edge of the cameo for the maker of the medal for this design, cut glass back and gilded bronze frame, measures 3 inches. Very good.

Hammer Price: 450.00

**24 19TH C. SULPHIDE CAMEO
PLAQUE OF A WOMAN**

Incrusted portrait of a woman, measures 3.25 inches. Very good.

Hammer Price: 650.00

**LOT #****25 PAIR OF 19TH C. SULPHIDE
CAMEO NAPOLEON I TUMBLERS**

Incrusted portraits of Napoleon I by Baccarat, signed 'Andrieu' on the lower edge of the cameo for the maker of the medal for this design, blue enameling, measure 3.75 inches each. Chipped decorative element on the side of one tumbler.

Hammer Price: 900.00

**26 19TH C. SULPHIDE CAMEO
PLAQUE OF A GENTLEMAN**

Incrusted portrait of an unknown gentleman, measures 3 inches. Some very light scratches on the front, overall good.

Hammer Price: 550.00

**27 RARE 19TH C. ENAMELED
SULPHIDE ROOSTER PATCH BOX**

Incrusted colored sulphide of a rooster with the french flag on a cut glass patch box, measures 2.25 inches. One encased bubble on the right side of the flag, overall very good.

Hammer Price: 450.00

**28 19TH C. ENAMELED
SULPHIDE CAMEO OF ST.**

MARGUERITE Incrusted colored sulphide portrait of Saint Marguerite, cut glass back, sterling inset band around the sides, measures 2.5 x 2.25 inches. Faint scratch on the front, a few small chips



Dec. 6, 2014 - Three Centuries of Decorative Arts 12/6/2014

LOT #

and flakes on the cut back.

Hammer Price: 550.00

29 19TH C. SULPHIDE CAMEO
PLAQUE OF NAPOLEON I Incrusted
portrait of Napoleon I, signed 'Andrieu'
on the lower edge of the cameo for the
maker of the medal for this design,
gilded frame with satin, framed size of
4.25 x 3.75 inches. One small pit on the
front, overall good.

Hammer Price: 500.00

**LOT #**

of Britain, measures 3.5 x 2.5 inches.

Flakes around the edges.

Hammer Price: 450.00

33 19TH C. SULPHIDE CAMEO
PLAQUE OF NAPOLEON I Incrusted
portrait of Napoleon I, after the medal
by Andrieu, cut glass back, measures 3
inches. Factory inclusion on the bottom
left, chip on the back, good overall.

Hammer Price: 400.00



30 19TH C. SULPHIDE CAMEO
PLAQUE OF KING HENRY IV Circa
1820 incrusted portrait of King Henry
IV of France after the medal by
Guillaume Dupre, signed 'Desprez Rue
des Recolets No. 2 à Paris' on the back
of the cameo, measures 5 x 4 inches.

Small abrasion on the front, hanger has
been reglued, good overall.

Hammer Price: 950.00



34 19TH C. SULPHIDE CAMEO
PLAQUE OF JESUS Incrusted
representation of Christ by Baccarat, cut
glass back and sides, measures 3.5 x
2.75 inches. Chip on the lower left.

Hammer Price: 250.00



31 19TH C. SULPHIDE CAMEO
PLAQUE OF A MAN Incrusted portrait
of a man, measures 3.25 inches. Very
good.

Hammer Price: 525.00



35 19TH C. SULPHIDE CAMEO
PLAQUE OF GENERAL BLÜCHER
Circa 1820, incrusted portrait of
Prussian General Gebhard Leberecht von
Blücher (1742-1819), faceted and
beveled sides, signed 'Desprez Rue des
Recolets No. 2 à Paris' on the back of
the cameo, measures 3.375 inches. A
very faint spot of discoloration runs
through the inside at the bottom of the
piece, very good overall.

Hammer Price: 550.00



32 19TH C. SULPHIDE CAMEO
PLAQUE OF GEORGE IV Incrusted
portrait of George IV (1762-1830) King



Dec. 6, 2014 - Three Centuries of Decorative Arts 12/6/2014

LOT #**36 TWO FRENCH 19TH C. SULPHIDE CAMEO PLAQUES**

Incrusted portrait of Marquis de Lafayette (1757-1834), measures 3 inches. Plus an incusted portrait of General Maximilien Foy (1775-1825) by Baccarat, measures 3.5 x 2.5 inches. Small chip on one point for the Lafayette piece, very good overall. Hammer Price: 650.00

**37 TWO FRENCH 19TH C. SULPHIDE CAMEO PLAQUES**

Incrusted portrait of King Charles the X of France (1757-1836), cut glass back and sides, measures 2 x 1.5 inches. And an incusted cameo portrait of Duc de Bordeaux (1820-1883) grandson of Charles X, gilded broze bezel, measures 2.5 inches. Some scratches on the Bordeaux piece, very good overall. Hammer Price: 600.00

**38 TWO FRENCH 19TH C. SULPHIDE CAMEO PLAQUES**

Incrusted portrait of George III (1738-1820), King of England by Baccarat, measures 3.5 inches, chips and scratches. And an incusted portrait of Napoleon I after the medal by Andrieu, measures 3 x 2.25 inches, light scratches on the back, very good overall. Condition noted in description. Hammer Price: 400.00

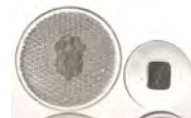
**LOT #**

39 TWO 19TH C. SULPHIDE CAMEO PLAQUES OF MILITARY MEN Two incusted portrait plaques of men in military uniforms, measure 3.5 and 2.75 x 2 inches. The oval piece has some chipped points on the back, very good overall.

Hammer Price: 750.00

**40 TWO 19TH C. SULPHIDE INCRUSTATIONS WITH HERALDRY**

Plate with and incusted coat of arms, cut glass base, measures 4.25 inches. And a plaque with an incusted stag head, pontil marks on the back, measures 3 inches. Very good. Hammer Price: 650.00

**41 19TH C. SULPHIDE DOOR PLATE OF THE VIRTUE PRUDENCE**

A 'Door Plate' with an incusted portrayal of the cardinal virtue 'Prudence' holding a book and a wreath, gilded bronze frame with hanging chain, measures 9.75 x 3 inches. Light scratches on the front visible with magnification, chip on the lower front edge.

Hammer Price: 2,400.00



42 TWO 19TH C. SULPHIDE CAMEO PORTRAIT PLAQUES Two incusted portraits of men, one with a gilded bronze frame, measure 3 inches each. The framed piece has been reglued



Dec. 6, 2014 - Three Centuries of Decorative Arts 12/6/2014

LOT #

with residue visible. The other has a light scratch on the front.

Hammer Price: 450.00

43 19TH C. SULPHIDE CAMEO
PLAQUES OF NAPOLEON & WELLI

Incrusted portraits of Napoleon I after the medal by Andrieu and the Duke of Wellington, measure 2.75 and 3 inches. Very good.

Hammer Price: 400.00



44 TWO 19TH C. SULPHIDE
CAMEO PORTRAIT PLAQUES Circa

1820 incusted dual portrait of Napoleon I and Marie Louise after the medal by Andrieu, signed 'Desprez Rue des Recolets No. 2 à Paris' on the back of the cameo, gilded bronze bezel, measures 2.75 inches. Plus another incusted dual portrait in the Roman theme, measures 2.25 inches. Very good.

Hammer Price: 800.00



45 PAIF OF 19TH C. SULPHIDE
CAMEO PLAQUES OF A ROYAL

Incrusted portrait pair, possibly Queen Victoria and Prince Albert, measure 2 x 1.25 inches each. One 1/4 inch crack in a corner of the Queen.

Hammer Price: 300.00

**LOT #**

46 19TH C. SULPHIDE CAMEO
PLAQUE OF THE DUCHESS D'ANG

Incrusted portrait of the Duchess D'Angoulême (1778-1851) daughter of Louis XVI, signed on the back of the cameo "L'Escalier De Crystal Paris", gilded metal frame, measures 2.5 x 2.25 inches. Very good.

Hammer Price: 500.00



47 19TH C. SULPHIDE CAMEO
PLAQUE OF VOLTAIRE Incrusted

portrait of Voltaire (1694-1778), gilded bronze frame, measures 2.5 inches. Very good.

Hammer Price: 300.00



48 TWO 19TH C. SULPHIDE
CAMEO PLAQUES OF MILITARY

MEN Two incusted portrait plaques of men in military uniforms, one with a gilded bronze frame, measure 3 and 3.75 inches. Very good.

Hammer Price: 950.00



49 19TH C. SULPHIDE CAMEO
PLAQUE OF LOUIS XVIII

Heart-shaped plaque with an incusted portrait of Louis XVIII, cut glass back and sides, measures 2.75 x 2 inches.

Very good.

Hammer Price: 1,300.00



Dec. 6, 2014 - Three Centuries of Decorative Arts 12/6/2014

LOT #

50 19TH C. SULPHIDE
MEDALLION PLAQUE OF
SHAKESPEARE Incrusted portrait of
William Shakespeare, medallion dated
1818, uncut glass with a rough pontil
mark across the top, measures 4 inches.
Abrasion on the back, good overall.
Hammer Price: 400.00



51 TWO 19TH C. SULPHIDE
INCRUSTATIONS WITH
HERALDRY Tear drop shaped plaque
incrusted with a coat of arms for the
Order of the Garter, cut glass back,
measures 2.5 x 1.5 inches, very good.
Plus an incrustated plaque with a coat of
arms, cut glass back, measures 3 inches,
small scratch on the front. Condition
noted in description.
Hammer Price: 1,200.00



52 19TH C. SULPHIDE SCENT
BOTTLE & JASPERWARE
PENDANT Very small incrustated scent
bottle with an icon, measures 1.25
inches. Plus a green jasperware pendent
with an enchantress, measures 1.75.
Oxydation on the bezel of the pendant.
Hammer Price: 300.00



53 PAIR OF 18TH CENTURY
INTAGLIO PORTRAITS Intaglio
portraits under beveled glass, gilded
frame, measure 3.5 x 2.25 inches each.
Good, not examined outside of the

**LOT #**

frames.
Hammer Price: 170.00

54 CRYSTAL EWER WITH
SULPHIDE CAMEO OF ROBERT
BURNS Incrusted portrait of Scottish
poet Robert Burns (1759-1796) on a
crystal ewer, measures 12.75 inches.
Hammer Price: 1,100.00



55 STEUBEN ART GLASS
CRYSTAL RETREIVER DOG Signed
on the base, measures 5 inches. Very
good.
Hammer Price: 375.00



56 LIMITED EDITION STEUBEN
ART GLASS CRYSTAL FISH Signed
and numbered 84/300 on the base,
initialed SHS, measures 7.25 x 16
inches. Very good.
Hammer Price: 500.00



57 STEUBEN ART GLASS
ROMAN CAT & VAL ST. LAMBERT
CAT Both are signed, measure 2.25 x
3.75 and 1.75 x 5.5 inches. Very good.
Hammer Price: 100.00



58 PAIR OF STEUBEN ART
GLASS CRYSTAL DOVE FIGURES
Signed on the tails, measure 2.5 x 7.5



Dec. 6, 2014 - Three Centuries of Decorative Arts 12/6/2014

LOT #

inches each. Very good.

Hammer Price: 225.00

**59 STEUBEN ART GLASS
CRYSTAL HERITAGE DRAGON**Encased bubbles, signed on the base and
initialed BXW, measures 5.5 x 7.5

inches. Very good.

Hammer Price: 375.00

**LOT #**

Hammer Price: 150.00

**64 STEUBEN ART GLASS
LIMITED EDITION CRYSTAL
MONKEY** Signed on the base and
numbered 147/500, initialed SHS,
measures 6.5 inches. Very good.

Hammer Price: 300.00

**60 STEUBEN ART GLASS
CRYSTAL TRUMPETING
ELEPHANT**Signed on the base,
measures 7.5 x 5.5 inches. Very good.

Hammer Price: 200.00

**65 STEUBEN ART GLASS
CRYSTAL DUCKLING FIGURE**Signed on the base, measures 7.75
inches. Very good.

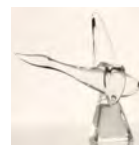
Hammer Price: 170.00

**61 STEUBEN ART GLASS
CRYSTAL EAGLE WITH GLOBE**Signed on the base, measures 6.25 x 12
inches. Very good.

Hammer Price: 250.00

**66 STEUBEN ART GLASS
CRYSTAL FLYING GOOSE FIGURE**Signed on the base, measures 10 x 10.5
inches. Very good.

Hammer Price: 225.00

**62 TWO STEUBEN ART GLASS
CRYSTAL BEAVER FIGURES**Signed on their bases, measure 3 x 6 and 3.5 x
4.5 inches. Very good.

Hammer Price: 375.00



**67 SET OF THREE STEUBEN ART
GLASS CRYSTAL SWANS** Signed on
their bases, measure 5.5, 4.25 and 3.5 x
8 inches. Very good.

Hammer Price: 225.00

**63 STEUBEN ART GLASS FOX,
RABBIT & ROMAN CAT FIGURES**Signed on their bases, measure 4.5, 3.25
x 4 and 2.25 x 3.75 inches. Very good.**68 PAIR OF STEUBEN ART
GLASS CRYSTAL SEAL FIGURES**Signed on the bases, measure 5.25 and
5.5 inches. Very good.

Hammer Price: 275.00



Dec. 6, 2014 - Three Centuries of Decorative Arts 12/6/2014

LOT #**69 ART GLASS FISH WITH ENCASED BUBBLES, SIGNED**

Encased bubble eye and body, signed on the bottom 'Ecorde 97624 Lindi Krauel' Very good.

Hammer Price: 275.00

**LOT #**

Hammer Price: 30.00

74 PAIR OF GILDED BRASS ALTAR STICKS Paw foot bases with relief decoration. Each measures 18 x 7 inches. Good condition.

Hammer Price: 150.00

**70 C. 1890 SLATE AND BRONZE GARNITURE AS TABLE LAMPS A**

bronze classical urn with figures in relief on a slate base that has intaglio decoration highlighted by gilding. These are circa 1890 garniture converted to electric table lamps. Measure 30 x 6 x 5 inches each, 14 inches to the top of the bronze urn. Very good noting small slate corner and edge flakes.

Hammer Price: 425.00



75 19TH CENTURY BRASS AND MARBLE TABLE LAMP A 19th c. banquet lamp with cut glass fluid font, now converted to a table lamp. Measures 31 x 5 inches and 20 inches high to the top of the font. Good condition.

Hammer Price: 45.00

**71 ITALIAN RED, BLACK AND GOLD TABLE LAMP 20th century.**

Measures 30 x 15 inches. Good noting flaking paint from the red shade.

Hammer Price: 30.00



76 19TH C. FLUID LAMP CONVERTED TABLE LAMP A neo-classical style paw foot brass lamp with cut crystal fluid font circa third quarter of the 19th century, now as a modern table lamp. Measures approx. 20.5 inches to the top of the font and 33 inches overall Dent at one corner, cracked font.

Hammer Price: 30.00

**72 19TH C HEAVY BRASS ALTAR STICK**

Measures 26 x 8 inches. Very good condition

Hammer Price: 70.00

**77 19th C. EMBOSSED BRASS & WOOD ALTAR CANDLE STANDS A**

pair that measure 21.5 x 42 x 6 inches each. Very good condition.

Hammer Price: 375.00



73 PAIR OF ANTIQUE IRON AND WIRE URNS Each measures 18 x 14 inches. Losses and loosened wire wraps.



Dec. 6, 2014 - Three Centuries of Decorative Arts 12/6/2014

LOT #

78 CIRCA 1900 BRASS
FIREPLACE FENDER Measures 13 x
43 x 12.5 inches. Good condition.
Hammer Price: 100.00

**LOT #**

Measures 56.75 x 25 x 17.25 inches.
Very good noting only one minor loss of
vener, front just above the door. No
other damage, wear or repair.
Hammer Price: Not Sold

79 WALNUT CONSOLE TABLE
WITH INLAID CROWN Measures 32 x
46.25 x 22.75 inches. Repairs and
unevenness.
Hammer Price: Not Sold



83 VERY UNUSUAL VICTORIAN
CAST IRON PLANT STAND An
ornate three tier cast iron plant stand.
Nice quality casting, intricate designs.
Measures approximately 43.5 x 30.5
inches. Good condition, no major
damage or repair. One minor break in
the casting up under the top tier.
Hammer Price: 450.00



80 19TH C. CONTINENTAL
MAHOGANY SLANT FRONT DESK
With fitted interior, serpentine front,
three drawers, interesting wood grain.
Measures 44.25 x 51 x 25 inches. Good.
Hammer Price: Not Sold



81 LARGE FORGED ANDIRONS
WITH CRESSETS AND POT HOOKS
Forged and riveted pair with cresset pots
and swing out pot hooks, incised
decorative designs in the iron. A pair
that measure 32 x 12 x 38 inches each.
Good condition.
Hammer Price: 150.00



82 FRENCH BRONZE MOUNTED
SECRETAIRE ABATTANT Early 20th
century drop front secretary desk with
marquetry design of a hanging fruit
basket on the door, fitted interior, tow
lower doors and bronze mounts.



84 19TH C. FRENCH CUBE
MARQUETRY SECRETAIRE
ABATTANT A drop front secretary on
legs, marble top over central case
covered with cube marquetry and bronze
mounts. The interior is divided with
compartments and has six serpentine
front drawers. Of special note is the
quality of the cast bronze frieze just
below the marble top. Circa 1850 or
before. Nice patina. Measures 56 x 40.25
x 16.5 inches. Very good condition,
minor repairs and a split on the right side
with slightly discolored woods in that
area. No major damage or repair. Sturdy
and good.
Hammer Price: 1,000.00



Dec. 6, 2014 - Three Centuries of Decorative Arts 12/6/2014

LOT #

85 CONTINENTAL OAK CABINET WITH 17TH C. ELEMENTS An 85.5 inch high cabinet of dark oak with two 17th century carved oak doors. Measures 38.5 inches wide and 23.5 inches deep. Good as noted. Hammer Price: 100.00



86 18TH C. AMERICAN CHIPPENDALE SLANT FRONT DESK A cherry wood desk with slant lid over four drawers, the interior fitted with cubby holes and drawers. Nice waxed old finish with good warm patina, all original interior apparently untouched, original brasses. Measures 42.5 x 39.25 x 20 inches. Very good noting old repair to the original bracket feet on one side. Otherwise very good with no other damage or repair. Hammer Price: 525.00



87 19TH C. MAHOGANY ARCHITECT'S TABLE Old original leather inset top, slide out side shelves and front drawer. Measures 29.5 x 21.5 x 21.5 inches. Missing a piece of the apparatus for adjusting the top writing surface. Hammer Price: 200.00



88 19TH C. KOREAN PERSIMMON WOOD CHEST Measures 55.25 x 38.75 x 17.5 inches. Very good, nice patina, no damage or

**LOT #**

repair.
Hammer Price: 425.00

89 CA. 1890 CAST IRON UMBRELLA STAND W THISTLE MOTIF Embossed motto of 'NEMO ME IMPUNE LAGESIT' over standing lion and thistle motif. Red and green repaint. Measures 41 x 23.25 x 13 inches. Very good, original pans, no breaks. Hammer Price: 300.00



90 17TH C. DROP LEAF TRESTLE TABLE Measures 26 x 45 x 33.25 inches. Scattered repairs and rework. Hammer Price: Not Sold



91 IRON AND SHEET METAL TABLE WITH STAR CUT-OUT Sheet iron top with iron legs. Measures 29.25 x 29 inches in diameter. Good, oxidation. Hammer Price: 40.00



92 PAIR FORGED IRON ANDIRONS WITH CRESSETS A Pair that measure 27 x 12 x 23 inches. Very good Hammer Price: 90.00



Dec. 6, 2014 - Three Centuries of Decorative Arts 12/6/2014

LOT #**93 BRASS FIREPLACE FENDER**

Measures 12.5 x 48.75 x 13 inches.

Some separations.

Hammer Price: 40.00

**LOT #**

face appears to be a replacement.

Hammer Price: 500.00

94 CIRCA 1800 HUTCH TABLE

Measures 26.5 x 37.75 x 37.75 inches.

Major replacements and reworking.

Hammer Price: 100.00

**98 18TH C. MAHOGANY****CHIPPENDALE TEA TABLE** With

dish top, slide out end stands, scroll cut

skirt. Leg repair. Measures 27.5 x 16.5 x 25.5 inches. Refinish and repair to one leg. Otherwise good with no other repair or replacements.

Hammer Price: 550.00

**95 PILGRIM ERA PINE CHEST**

WITH OAK ORNAMENTS Measures

31 x 41.75 x 19 inches. Major

replacements. The legs and various other pieces are replacements

Hammer Price: Not Sold

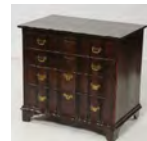
**99 CIRCA 1800 MAHOGANY**

BLOCK FRONT CHEST Measures 31.5

x 34 x 21.25 inches. Considerable

rework and repair throughout

Hammer Price: 475.00

**96 18TH C. AMERICAN WALNUT**

CHIPPENDALE CHEST With applied

top molding, 1/4 columns flanking four

drawers, ogee bracket feet, pine

secondary woods, walnut framing and

veneers on each drawer face. Measures

36 x 43 x 23 inches. Very good. Wear

and nicks and dents commensurate with

age. Apparently the original feet, original

back, original drawers without repair, no

major damage, replacement or repair.

Hammer Price: 600.00

**100 19TH C. MAHOGANY QUEEN**

ANNE DESK Measures 27.5 x 35.5 x

19 inches. Repair to the top.

Hammer Price: 275.00

**101 19TH C. AMERICAN**

PAINTED CHEST Measures 11 x 19 x

12 inches. Later decoration in

Pennsylvania Dutch motif. Good noting

minor wear.

Hammer Price: 170.00

**97 19TH C. AMERICAN CHERRY**

LOW BOY Measures 30.5 x 30.5 x 21

inches. Refinished, the center drawer



Dec. 6, 2014 - Three Centuries of Decorative Arts 12/6/2014

LOT #

102 CIRCA 1890S BRONZE
MOUNTED MARBLE PEDESTAL

Measures 44 inches high. Stain and
minor repairs.

Hammer Price: 350.00



103 18TH C. CAST IRON FIRE
BACK WITH FLEUR DE LIS Cast
designs in relief, a crown with motto
Sevl Con Tre Tovs, fleur de lis, flags etc.
Measures 20 x 20.75 inches. Heavy
corrosion along the base and a hole
lower left.

Hammer Price: Not Sold



104 CAST IRON FIRE BACK W
FLEUR DE LIS & DATE OF 1712 Cast
designs in relief and a date of 1712.

Measures 24.5 x 25 inches.

Hammer Price: 225.00



105 CIRCA 1800 PEWTER
CABINET Replacements and repairs.
Measures 70 x 50 inches. Considerable
rework and repair throughout

Hammer Price: 450.00



106 C. 1900 TALL BUILT-IN
CABINET IN BLUE PAINT Nice
raised panel doors with brass hardware.
Good as shown.

Hammer Price: 175.00

**LOT #**

107 GOOD CIRCA 1900 FRENCH
PROVINCIAL CURIO CABINET A
nicely carved oak cabinet with good dark
color, glazed glass in the crown, corners,
doors and side lights. A blind door base
below. The overall measurements are 86
x 32 inches. Very good condition noting
a minor chip to the top crown. All
original and good overall.

Hammer Price: 2,500.00



108 EARLY 20TH C. CAST IRON
ROOSTERS 35 INCHES HIGH A pair
that measure 35 x 12 x 21 inches each.
Nice casting and old original green paint.
Very good.

Hammer Price: 2,200.00



109 CA. 1900 MINIATURE
PORTRAIT OF A CLASSICAL
MAIDEN Hand painted, signed lower
left, ornate easel-back frame, measures
5.5 x 4.25 inches. Good, gilding worn
from the frame.

Hammer Price: 825.00



110 CIRCA 1900 PAINTED
MINIATURE Unsigned, brass frame
measures 3.75 x 3 inches. Good.

Hammer Price: 225.00



Dec. 6, 2014 - Three Centuries of Decorative Arts 12/6/2014

LOT #

111 CIRCA 1900 MINIATURE
 PORTRAIT OF A SOLDIER Hand
 painted, signed 'Bayard' middle right,
 ornate brass frame, measures 4.5 x 3.25
 inches. Very good.

Hammer Price: 300.00

**LOT #**

115 19TH C. CONTINENTAL
 BRACKET CLOCK A good gilt
 decorated wood case with scroll cut
 brass insets, unmarked brass movement.
 Measures 17 x 9.5 x 7 inches.

Considerable wear to the case, good
 overall, a chip to one foot, running
 condition unknown.

Hammer Price: 150.00



112 C.1900 MINIATURE
 PORTRAIT MADAME LEBRUN Hand
 painted image of Madame LeBrun and
 her daughter after the work by LeBrun,
 signed lower right, velvet and brass
 easel-back frame, measures 4.5 x 4.25
 inches. Gilding and velvet is worn on the
 frame, otherwise good.

Hammer Price: 120.00



116 CIRCA 1900 MINIATURE
 PORTRAIT OF A GENTLEMAN Hand
 painted, unsigned, ornate easel-back
 frame, measures 5 inches. Good
 condition.

Hammer Price: 110.00



113 C. 1900 MINIATURE
 PORTRAIT OF 18TH C. FRENCH
 LADY Hand painted, signed middle
 right, ornate easel-back frame, measures
 5.5 x 4.252 inches. Good, gilding worn
 from the frame.

Hammer Price: 800.00



117 ANTIQUE COPPER SNAIL
 FORM FOOD MOLD Measures 5 x 7.5
 inches. Good condition.

Hammer Price: 225.00



114 C. 1900 MINIATURE
 PORTRAIT OF 18TH C. FRENCH
 LADY Hand painted, signed 'Russell'
 lower right, bezel set in a natural
 material that appears to be tortoise shell
 inlaid with metalwork. Measures 3.25
 inches. Frame is cracked in several
 places, but intact.

Hammer Price: 90.00



118 CIRCA 1800 MINIATURE
 PORTRAIT OF A YOUNG MAN
 Attributed to Barbara Krafft (Austria,
 1764-1825), hand painted, signed middle
 right, currently displayed in a leather
 carrying case that measures 3 x 2.5
 inches when folded. Good condition.

Hammer Price: 300.00



Dec. 6, 2014 - Three Centuries of Decorative Arts 12/6/2014

LOT #

119 19TH CENTURY CHINESE
PAINTING Image area 45 x 11.75
inches, frame measures 48.75 x 17.25
inches. Good condition noting a repaired
tear upper left.



Hammer Price: 80.00

120 18TH C. DUTCH SCHOOL
GENRE SCENE OIL ON CANVAS
Unsigned. Canvas measures 18.75 x
22.75 inches, frame measures 26.5 x
30.5 inches. Good condition.



Hammer Price: 825.00

121 18TH C. DUTCH SCHOOL
GENRE SCENE OIL ON CANVAS
Unsigned. Canvas measures 18.75 x
22.75 inches, frame measures 26.5 x
30.5 inches. Good condition.



Hammer Price: 975.00

122 C. 1800 CONTINENTAL
MIRROR CREAM, GOLD, GREEN
PAINT A very good carved and
gessoed wood mirror painted cream,
green and gold, late 18th, early 19th
century. Measures approximately 50 x
40 inches. Color and gesso loss
throughout. No major damage or repair.



Hammer Price: 500.00

LOT #

123 CIRCA 1800 MINIATURE
PORTRAIT OF A MAN Hand painted,
unsigned, ornate frame, measures 2.25 x
1.5 inches. Portrait is slightly warped.
Hammer Price: 125.00



124 CIRCA 1800 MINIATURE
PORTRAIT UNDER GLASS Hand
painted miniature portrait under beveled
glass top on a gold or gold-filled bezel,
possibly a memorial piece, unsigned,
unmarked, measures 1.5 x 1.25 inches.
Glass is chipped on the left.
Hammer Price: 300.00



125 CIRCA 1900 MINIATURE
PORTRAIT OF A GENTLEMAN Hand
painted, unsigned, gilded easel-back
frame, measures 3 x 2.25 inches. Good.
Hammer Price: 140.00



126 CIRCA 1900 MINIATURE
PORTRAIT OF A LADY Hand painted,
signed middle right, after the original
painting by Joseph Karl Stieler 1834
titled 'Irene, Countess von
Arco-Steppberg', brass frame, measures
2.75 x 2 inches. Light pitting along the
right.
Hammer Price: 225.00



Dec. 6, 2014 - Three Centuries of Decorative Arts 12/6/2014

LOT #

127 CIRCA 1900 ITALIAN
MINIATURE PORTRAIT Hand
painted, signed lower right along the
edge of the harp, brass frame, measures
2.25 inches. Very good.

Hammer Price: 300.00



128 CIRCA 1900 MINIATURE
PORTRAIT OF A LADY Hand painted,
unsigned, brass frame, measures 4 x 2.5
inches. Good.

Hammer Price: 80.00



129 19TH C. MINIATURE
PORTRAIT OF A LADY Hand painted
on copper, unsigned, measures 2.25 x
1.75 inches, wooden frame measures 3.5
x 3 inches. Overall soiling, one small loss
at the lower right.

Hammer Price: 60.00



130 A GEORGIAN MAHOGANY
KNIFE BOX Nice patina, dovetailed
construction, original brass handle.
Measures 5 x 15 inches. Very good, no
damage or repair.

Hammer Price: 90.00



131 TWO ANTIQUE COPPER
FOOD MOLDS Birmingham hallmark
on one, the two pieces measure 5.5 x 5
inches and 7 x 5.25 inches. Minor loss of
shape, very good overall.

**LOT #**

Hammer Price: 225.00

132 19TH C. CARVED WOOD
BUSTS OF PEASANT MAN &
WOMAN Two pieces each measuring
approximately 14 x 8.75 inches. Minor
age splits and alteration.

Hammer Price: 325.00



133 18TH CENTURY SANTO
FIGURE WITH GLASS EYES A
carved and gessoed wood figure of John
The Baptist with painted surface and
glass eyes. Measures 15.75 x 7 inches.
One detached hand, the other missing,
breaks, lost pieces and surface loss.

Hammer Price: 130.00



134 CIRCA 1800 MINER'S LAMP
WITH FIGURAL CHICKEN An iron
miner's lamp with Rooster figural thumb
screw valve, circular form hung from a
trunnion mount and a wrought iron
hanger. Plus another. Two pieces that
measure 19.25 x 7 inches, and 6.5 x 5
inches excluding the hook. Good overall.

Hammer Price: 225.00



135 18TH / 19TH C. DELFT GLAZE
FLAGON WITH PEWTER MOUNT
Approximately 16 inches high. Good
overall. There are no chips, cracks or
repairs.



Dec. 6, 2014 - Three Centuries of Decorative Arts 12/6/2014

LOT #

Hammer Price: 200.00

136 TWO 18TH CENTURY FLUID LAMPS Two pieces each measuring approximately 4 x 4 inches. Good condition.

Hammer Price: 60.00



137 TWO 18TH CENTURY IRON GREASE LAMPS Two pieces with one larger in size that measures 3 x 6 inches, and the smaller piece measures 3.25 x 4.5 inches. Good condition.

Hammer Price: 40.00



138 18TH C. CHINOISERIE HANGING CORNER CABINET Measures 32.25 x 21.75 x 9 inches. Dark surface with what appears to be sponged dark color added.

Hammer Price: Not Sold



139 17TH / 18TH CENTURY JOINED OAK STOOL Dark oak, mortised with pegged construction. Measures 20.5 inches high and approx. 12 inches square.

Hammer Price: 130.00



140 PAIR 18TH C. CONTINENTAL RED PAINTED CHAIRS WITH GOLD The original red paint with gold

**LOT #**

decoration, woven seats. Each measures 45 x 21.25 x 18 inches each. Good noting insect damage, reinforcement and partial dry rot loss to some feet. All of the ball feet are original.

Hammer Price: Not Sold

140A ERNEST WALBOURN (1872-1927) OIL ON CANVAS Titled 'At Chigwell, Essex' with a brass tag on the frame, signed lower right, canvas measures 18 x 24 inches, frame measures 24.5 x 30.5 inches. Light crazing, the printing on brass title tag is worn and difficult to read.

Hammer Price: 525.00



141 18TH C. WOOD STORAGE CHEST IN OLD BLUE PAINT With older blue paint, bread board end top, interesting forged iron hinges and inside till. Measures 13 x 30.5 x 16.5 inches. Very good.

Hammer Price: 275.00



142 GIBBON, DECLINE AND FALL OF THE ROMAN EMPIRE, 8 VOLS. Edward Gibbon: 'The History of the Decline and Fall of the Roman Empire,' edited and with additional notes by William Smith, LL.D., published by John Murray, 1854. Eight volumes, 8vo, full calf, impressed gilt spines and East India College crest to boards. Name plate on marbled paste down of volume



Dec. 6, 2014 - Three Centuries of Decorative Arts 12/6/2014

LOT #

I, named as awarded to J.C. St. Clair by East India College, Herts., at the Public Examination. Marbled foreedges. Very minor wear considering age. Mild toning, very good condition.

Hammer Price: 525.00

143 WORKS OF TOBIAS

SMOLLETT, 8 VOLS., 1797, JOHN MOORE Eight volumes of 'The Works of Tobias Smollett, M.D., with Memoirs of His Life; to Which is Prefixed A View of the Commencement and Progress of Romance,' by John Moore, M.D.

Published in London, dated 1797. 8vo, fine handmade paper, also with 1797 watermark. Full calf, embossed spine, impressed gilt. Shows normal wear and toning for age.

Hammer Price: 300.00



144 SECRET MEMOIRS OF THE COURTS OF EUROPE, 12 VOLS.,

Twelve volumes of 'Secret Memoirs of the Courts of Europe, From the 16th to the 19th Century.' Volumes I and II: The Court of Empress Josephine; vols. III and IV: Napoleon's Court and Cabinet of St. Cloud; vols. V and VI: The Royal Family of France; vols. VII and VIII: The Secret History of the Court of Berlin; vol. IX: The Court of Louis XIV; vol. X: The Private Memoirs of Louis XV; vols. XI and XII: Memoirs of the Court of Austria. 8vo, full calf with gilt spines and boards with floral decorations, gilt foreedges, each with silk

**LOT #**

bookmark. Fully illustrated, published by George Barrie & Son, Philadelphia, edition on Japanese vellum paper, numbered 298/1000. Circa 1900. Very good condition, very minor shelf wear.

Hammer Price: 900.00

145 1789 MAP OF WURTZBURG, GERMANY AND ENVIRONS Titled, 'Carte topographique d'Allemagne contenant une partie de Wurzburg et Bamberg et de Fulde les Duches Saxe Cobourg, Gotha, Meinungen, Hildbourgshausen.' From the larger set 'Grand atlas d'Allemagne en LXXXI feuilles.' Marked D.A. Hauer, Sculp., Norimb lower left. Circa 1789. Laid paper with clear watermarks. Measures 20 x 24.5 inches. Previous folds, some chipping, toning throughout.

Hammer Price: 60.00



146 VERY LARGE ZUNI TURQUOISE FROG FETISH With inlaid coral eyes and nose points.

Measures 4.5 x 7.5 inches. Very good condition without damage or repair.

Hammer Price: 525.00



147 SANTO DOMINGO CHUNK TURQUOISE NECKLACE With two part sterling silver beads. Necklace measures 28 inches in length. Excellent condition.

Hammer Price: 130.00



Dec. 6, 2014 - Three Centuries of Decorative Arts 12/6/2014

LOT #**148 JUDITH LEIBER AUSTRIAN CRYSTAL CLUTCH/EVENING BAG**

A gold colored metal purse with pink and green stone clasp, original mirror, comb and coin purse. Measures 3 x 4.75 inches with a drop from handle of 19.5 inches long. Unused condition, like new throughout.

Hammer Price: 375.00

**149 CHANEL QUILTED EVENING BAG/CLUTCH** Quilted satin with removable strap. No card present.

Measures 4.75 x 7.25 inches, with a drop from handle measuring 21 inches. Estate item sold here with return guarantee ensuring authenticity. Unused condition, like new throughout.

Hammer Price: 500.00

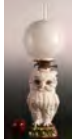
**150 14K GOLD MOUSE FIGURE ON MALACHITE** Stamped 14k

markings on the tail. Measures 2.25 x 2.5 inches. Very good condition.

Hammer Price: 375.00

**150A A LARGE SCHIERHOLZ PORCELAIN OWL FIGURAL OIL**

LAMP A porcelain figure with glass eyes, hollow body for the fluid and a replaced burner assembly. Blue under glaze markings under the base. Measures 17 inches to the burner, 28 inches overall. A very small chip to an applied oak leaf at the base. The entire lamp

**LOT #**

assembly is replaced including a porcelain fitter with notches that appear as chips. Is modern and marked USA with numerals.

Hammer Price: 350.00

151 TWO ENGLISH CUT CRYSTAL & STERLING COLOGNE BOTTLES One marked London 1904, the other is marked Birmingham 1900

and has a monogram on the lid, sterling collars, repousse lids and glass stoppers, measure 5 x 2 inches each. Minor rubs and flakes on the sides of the bottles.

Hammer Price: 90.00

**152 LONDON CUT CRYSTAL & SILVER OVERLAY COLOGNE BOTTLES** Samuel Jacob cut glass

cologne bottle with silver collar, repousse lid, hallmarks for London and dated 1910, measures 6 x 2.25 inches. Plus a fine silver overlay bottle, faint hallmarks on the base, measures 5.25 x 4.75. The glass stopper and bottom corners are chipped on the cut glass bottle.

Hammer Price: 60.00



153 TWO BIRMINGHAM CUT CRYSTAL & STERLING COLOGNE BOTTLES One marked 1907, repousse lid and cut glass stopper, measures 4.25 x 3 inches, chip on the base. Another with very faint hallmarks, sterling collar,



Dec. 6, 2014 - Three Centuries of Decorative Arts 12/6/2014

LOT #

repousse lid and cork stopper, measures 4 x 3 inches, the lid has some small punctures. Condition noted in description.

Hammer Price: 110.00

154 LONDON CUT CRYSTAL & STERLING COLOGNE BOTTLE Circa 1895, hinged repousse lid, cut glass stopper, sterling collar, measures 6.25 x 4.5 inches. Very good.

Hammer Price: 220.00



155 CHOKER LENGTH CARNELIAN AND GOLD FRIENDSHIP NECKLACE Each piece of polished carnelian set in gold is engraved with a different set of monogram initials. Unmarked. Excellent condition.

Hammer Price: 600.00



156 OUTSTANDING VINTAGE 80-INCH CULTURED PEARL ROPE

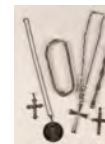
A very fine vintage estate piece of matched 6 millimeter cultured pearls with diamond clasps that enable configuration of different lengths from 80 inch rope to 30 inch opera or 21 inch princess or 31 inch opera lengths. The pearls are beautifully matched and knotted. Each clasp is set with diamonds. No markings found. Excellent condition without issue of any sort.

Hammer Price: 475.00

**LOT #**

157 GROUP OF STERLING SILVER CROSSES & JEWELRY The woven sterling silver necklace measures 17 inches, the bracelet with fleur de lis measures 8 inches, 13 inch 26 inch chain with cross and two 3 inch crosses. Very good condition.

Hammer Price: 400.00



159 14K GOLD BANGLE BRACELET W SEMI-PRECIOUS STONES Semi-precious stones in 14 gold with hand engraved designs. Measures 7 inches and weighs 24 grams including stones. Very good condition with light scratching from wear.

Hammer Price: 500.00



160 14K YELLOW GOLD AND GOLDSTONE BRACELET Seven bezel set Aventurine glass cabochons making a bracelet that measures 7 inches in length and weighs 17 grams total with all stones included. Very good condition with light wear under magnification.

Hammer Price: 120.00



161 14K ROPE BRACELET, ST. CHRISTOPHER MEDAL & HEARTS Two unmarked gold charms including a St. Christopher medal and a double heart charm. A 14k bracelet 7.5 inches in length 14k and 43 grams. Good condition noting signs of wear.

Hammer Price: 725.00



Dec. 6, 2014 - Three Centuries of Decorative Arts 12/6/2014

LOT #

163 CHRISTOPHER WALLING
18K GOLD & BIWA PEARL
EARRINGS Pair of clip-on earrings that
measure 1 x .75 inches with 18k
weighing 12 grams including Biwa
pearls. Signed Walling 18k. Very good
condition..
Hammer Price: 500.00



164 VINTAGE YELLOW GOLD
DIAMOND AND RUBY BEE
BROOCH An unmarked brooch with
approximately .20ct. Center diamond
and 37 other smaller full cut diamonds.
Measures .75 x 1.75 inches and weighs 7
grams Very good condition.
Hammer Price: 725.00



165 ILIAS LALAOUNIS 18K
RUBY, DIAMOND, SAPPHIRE
BRACELET Ilias Lalaounis Ruby Lion
Heads Bracelet, Solid 18K Yellow Gold
with ruby eyes, diamond mane and
sapphires along the band. Approximately
6 inches inside circumference and 39
grams. Very good condition.
Hammer Price: 1,250.00



166 ILIAS LALAOUNIS GEM SET
18K GOLD FIGURAL LION RING
18K Yellow Gold and Gem Set Lion
Head Ring by Ilias Lalaounis, Greece
circa 1980, nicely detailed and set with
emeralds and diamonds, signed
Lalaounis. Ring size 6, weighs 10 grams.

**LOT #**

Very good condition..
Hammer Price: 325.00

167 VINTAGE SEAMAN SCHEPPS
SHELL EARRINGS IN 14K Pair
Seaman Schepps Turbo shells wrapped
in gold set with cabochon green onyx;
14K clip backs. Marked on the earrings
P.S.V. of Seaman Schepps for "Patricia
Schepps Vaill" daughter of Seaman
Schepps who ran the company from
1972 until the late 1980's. Very good
condition.
Hammer Price: 975.00



168 EIGHT EXCEPTIONAL
VICTORIAN INTAGLIO SEALS ON
14K A very fine collection of Victorian
wax seal fobs on a heavy 7-inch 14k gold
charm bracelet weighing a total of 107
grams. The seal designs include
Carnelian carved with recumbent lamb,
clambroth colored stone with unicorn
crest, smoky colored stone with classical
male bust, smoky stone with crest and
motto Pro Virtute, light Carnelian with
dog and 'Sylvia', Carnelian with double
crest Dragon and Lion, clambroth oval
with classical scholar, dark green stone
with winged dragon crest. Very good
condition.
Hammer Price: 3,100.00



Dec. 6, 2014 - Three Centuries of Decorative Arts 12/6/2014

LOT #

169 TWO STRANDS 9MM CULTURED PEARLS W 18K & DIAMOND CLASP The first strand measures 18" or Princess necklace and the other at 16" is considered a Pearl choker. Both strands can be combined by attaching the threaded 18k Tivol marked clasps to make an Opera length strand. Excellent condition.
Hammer Price: 1,450.00



170 APPROX 2 CARAT TW DIAMOND AND 18K GOLD BRACELET AN 18k gold bracelet with 22 full cut diamonds each approximately .10ct each and wrist size of 7 inches long. Weighs 31 grams total. Excellent condition.
Hammer Price: 1,300.00



171 MARINE IVORY WHALE PENDANT ON 14K GOLD CHAIN A 22 inch 2mm Franco link chain is 14k and weighs 8 grams. Very good condition.
Hammer Price: 180.00



172 SIX STONE 14K YELLOW GOLD SCARAB BRACELET Measures 6 inches. Very good condition.
Hammer Price: 100.00

**LOT #**

173 ESTATE LOT OF THREE GOLD RINGS Three rings size 6, 6.5 and 7, gold ring with diamonds marked 14k weighs 12 grams, a white gold ring with square cut sapphire and diamonds. Combined weight of three rings is 42 grams. Good condition.
Hammer Price: 925.00



174 PAIR 14K YELLOW GOLD PEARL CLIP EARRINGS A pair of clip-on earrings that measure approximately 1 inch in diameter, marked 14k and weigh 14 grams total. Very good condition.
Hammer Price: 200.00



175 CHRISTOPHER WALLING DESIGNER 18K PEARL BAR BROOCH Christopher Walling 3397 Ridged Logic brooch, fresh water pearl bars set in 18K yellow gold measures 1 x 1.25 inches. Weighs 18 grams. Excellent condition.
Hammer Price: 500.00



176 14K GOLD BANGLE BRACELET WITH 25 DIAMONDS A white gold head with diamonds set on a 14K gold bangle bracelet with safety clasp. Weighs 35 grams. The inside wrist size 7 inches, marked 14k and weighs 35 grams total. Very good condition.
Hammer Price: 800.00



Dec. 6, 2014 - Three Centuries of Decorative Arts 12/6/2014

LOT #

177 MARLENE STOWE 18K YELLOW GOLD DIAMOND CLIP EARRINGS A pair of clip-on earrings measure 1.25 x 1 inch with pear shape pearl and diamond, marked M. Stowe. Pair weighs 30 grams. Very good condition showing some light wear in the brushed finish.

Hammer Price: 725.00



178 TRIPLE STRAND 6MM CULTURED PEARL PRINCESS NECKLACE Graduated strands that measure 17, 18 and 19 inches long, yellow gold clasp set with three pearls and 9 small sapphires. Very good condition.

Hammer Price: 275.00



179 1901 LIBERTY FIVE DOLLAR GOLD COIN U.S. Gold coin in gold bezel holder, pin pendant measures 1.5 x 1.25 inches; pin and holder are unmarked. Good condition showing slight signs of wear.

Hammer Price: 325.00



180 DOUBLE STRAND CULTURED PEARL CHOKER, 14K CLASP Strands of nicely matched 6 mm pearls with 14K white gold pearl and diamond clasp; graduated strands that measure 14.5 and 15.5 inches in length, clasp marked 14k. Very good condition.

Hammer Price: 275.00

**LOT #**

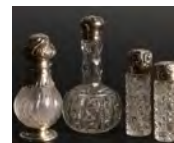
180A STRAND OF 27 AMBER BEADS Twenty-seven 20mm amber beads on a nylon cord, measures 26 inches.

Hammer Price: 140.00



181 FOUR CRYSTAL AND STERLING VANITY ITEMS Lot includes: a cologne bottle with a hinged sterling repousse lid and glass stopper; a powder shaker with pierced sterling repousse lid, sterling collar and foot, indecipherable hallmarks; a small Birmingham cologne bottle with a hinged sterling top, dated 1898, no stopper; and a small Birmingham cologne bottle with a sterling top, dated 1848, the collar is missing and therefore the lid is loose. Measure from 3 to 4.5 inches. Condition noted in description.

Hammer Price: 100.00



182 1883 LONDON CUT CRYSTAL, STERLING COLOGNE BOTTLE Hinged repousse lid and collar, cut glass stopper, measures 4.75 x 4 inches. Chip to the bottom of the stopper, edge rubs and flakes on the body.

Hammer Price: 70.00



183 1898 BIRMINGHAM CUT CRYSTAL, STERLING COLOGNE BOTTLE Hinged repousse lid and collar, cut glass stopper, measures 5.5 x



Dec. 6, 2014 - Three Centuries of Decorative Arts 12/6/2014

LOT #

4 inches. Very good.

Hammer Price: 110.00

184 TWO ENGLISH CUT CRYSTAL & STERLING COLOGNE BOTTLES Cologne bottle with a threaded repousse lid and sterling collar and shoulders, Birmingham marks and date of 1918, measures 4.25 x 3 inches. And a bottle with a hinged repousse lid and sterling collar, cut glass stopper, marked Birmingham and a dated 1905, measures 4.75 x 3.5 inches. Small edge rubs and flakes on both pieces.

Hammer Price: 200.00

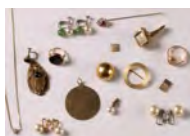


185 TWO STERLING AND CUT CRYSTAL COLOGNE BOTTLES A R. Blackinton Co. cologne bottle with a repousse sterling and glass stopper, measures 4.25 x 3 inches. Plus a cologne bottle with a threaded sterling lid and collar, no stopper present, marked Birmingham and date marked 1892, measures 4.25 x 3.5 inches, small chips on the cut glass sides. Condition noted in description.

Hammer Price: 70.00



186 GROUP LOT OF ESTATE JEWELRY Group ranging from a ring size 3, to a 14k necklace that measures approximately 16 inches in length. Pair simulated pearl clip earrings, cultured pearl clip earrings, cultured pearl and

**LOT #**

jade 14K white gold non-pierced earrings, cultured pearl tie tack, ruby and diamond stick pin, two rings, single earring and single cuff link watch. Plus three 14K items including Tiffany & Co. round brooch, round charm and chain with diamond pendant all of which weigh in total 14 grams. Good condition. Hammer Price: 250.00

187 GROUP LOT OF ESTATE JEWELRY Group of items ranging from a ring size 6 to a watch that measures 7 inches in length. Men's Vulcan Sensilarm watch (no band), lady's UTI Swiss gold watch stamped JP on the inside, Scrimshaw bird pendant, lady's unmarked diamond anniversary band size 6.5, lady's unmarked mounting set with two trillion cut diamonds. Good condition.

Hammer Price: 750.00



188 CARVED JADE PENDANT ON BEADED STRAND Two inch piece of carved jade on a strand of semiprecious stone beads, 30 inches long. Very good condition.

Hammer Price: 100.00



189 A CHINESE CELADON AND RUSSET JADE DOUBLE FISH PENDANT A carved jade and 18k gold wedding pendant that measures 2 x 1.25 inches. Very good condition.



Dec. 6, 2014 - Three Centuries of Decorative Arts 12/6/2014

LOT #

Hammer Price: 2,200.00

189A A CARVED JADE DRAGON IN GOLD MOUNT Measures 1.5 x1.75 inches. The gold mounting is unmarked. Very good condition overall.

Hammer Price: 250.00



190 ANTIQUE 78-INCH FOXTAIL WATCH CHAIN WITH STONES With 18 various bezel set purple, amber and red stones. Measures approximately 78 inches in length. Very good condition.

Hammer Price: 500.00



191 CHRISTOPHER WALLING DESIGNER 18K & PEARL EARRINGS Pair of clip-on earrings that measure 1 inch overall, 10mm pearl, weigh 18 grams. Excellent condition.

Hammer Price: 450.00



192 UNMARKED 14K GOLD BANGLE BRACELET WITH DIAMONDS The tapered bracelet has 15 full cut diamonds with a wrist size of 6.5 inches; weighs 18 grams total. Very good condition.

Hammer Price: 375.00

**LOT #**

193 14K YELLOW GOLD LOVE KNOT BROOCH Pin measures 1.25 inches in diameter, marked 14k and weighs 11 grams. Very good condition. Hammer Price: 210.00



194 RARE LECOULTRE 14K GOLD WATCH A vintage key form watch with a short chain and reticulated fish charm added. Weight of the watch, minus the movement, along with chain and fish is 10 grams. Good condition, running condition unknown.

Hammer Price: 425.00



195 LOT OF ESTATE JEWELRY 14K 6mm size 6 flat yellow gold band, 18K 3mm yellow gold band size 8, 18K 3mm yellow gold band size 9 and 18k yellow gold freeform ring guard in size 6. Total weight of 20 grams. All in very good condition.

Hammer Price: 450.00



196 FOUR COCO CHANEL PARIS FRANCE BUTTONS Two different sizes of buttons with rope border. Very good condition.

Hammer Price: 120.00



197 LOT OF ESTATE JEWELRY INCL CARTIER TIE CLIP Including 14k tie tack, green stone with red fleck



Dec. 6, 2014 - Three Centuries of Decorative Arts 12/6/2014

LOT #

watch fob, watch fob with intaglio, double sided rope bordered charm with flags unmarked, 14k straight back tie bar and 14k curved Cartier tie bar. Weight of marked items is 7 grams. All in good condition noting some pitting in the green stone and some darkness of the metal with intaglio.

Hammer Price: 240.00

198 LOT OF GOLD ESTATE JEWELRY ONE 14K yellow gold 15 inch serpentine chain, pair 14kt yellow gold blank mounting cuff links and platinum engagement mounting with two side tapered diamond baguettes. Total weight of 19 grams. Good condition. Hammer Price: 475.00



199 LOT OF GOLD ESTATE JEWELRY TWO Three pair of 14K yellow gold non-pierced earrings including pearl with rope rim, pearl in love knot and heavy oval screw back with lapis lazuli stone. One pearl in rope border has a crack, lapis stones show some light abrasion to each. Hammer Price: 375.00



200 14K YELLOW GOLD BRACELET WITH ENAMELED CHARMS Nice heavy C link 14k gold bracelet with ten different enameled and stone egg-shaped charms. Total weight of 60 grams. Some loss of enameling to

**LOT #**

backs of three eggs otherwise very good condition.

Hammer Price: 575.00

200A 18KT GOLD FLATTENED LINK BRACELET Marked Italy and 18kt on one link, measures 7.75 inches, weighs 37 grams.

Hammer Price: 1,000.00



201 18KT GOLD BROOCH AND EARRING SUITE Pair of 18kt yellow gold leaf screw back earrings with cultured pearls and matching 18kt yellow gold brooch. Set weighs 15 grams. Excellent condition. Hammer Price: 325.00



202 LOT OF GOLD ESTATE JEWELRY THREE Including 14k white gold heart pendant, 14k yellow gold plain round locket 1.25 inches and 14k yellow gold William Ruser Virgo zodiac pendant. The total weight is 43 grams. Very good condition noting some wear to the bright finished locket. Hammer Price: 875.00



203 PAIR 14K ENAMELED SHAMROCK CUFF LINKS WITH PEARLS Each cuff link set with three cultured pearls. Total weight of 11 grams. Good condition noting slight loss



Dec. 6, 2014 - Three Centuries of Decorative Arts 12/6/2014

LOT #

of enamel under magnification.

Hammer Price: 200.00

204 LOT OF 14K BRACELET AND ROPE CHAIN Bracelet measures 6.5 inches long and the rope chain measures 29 inches long. Both marked 14K, total weight 18 grams. Very good condition.

Hammer Price: 325.00



205 14K DOUBLE STRAND PEARL AND JADE BRACELET Double strand of 5mm cultured pearls and 5mm jade beads strung on 14kt yellow gold 'bamboo' clasp. Very good condition.

Hammer Price: 425.00



206 TWO UNMARKED GOLD CHAINS Rope chain measures 14 inches long and open link chain measures 21 inches long. Both unmarked, combined weight of 27 grams. Both in good condition.

Hammer Price: 650.00



207 BOXED VINTAGE JAEGER LECOULTRE TRAVEL WATCH With alarm, serial number 670895. Winds and runs. Watch has significant wear to the black edge, very minor dent to back and minimal scratching and wear.

Hammer Price: 275.00

**LOT #**

208 NINE STRAND FRESHWATER PEARL NECKLACE W 18K HEAVY CLASP Nine strands of freshwater pearls measuring 30 inches in length on a 20 gram, 16 diamond clasp.

Hammer Price: 575.00



208A LADIES 18K GOLD BRACELET W SEMI PRECIOUS STONES A 'Hugs and Kisses' link bracelet set with twelve oval cabochon cut semi-precious stones. Measures 7.5 inches in length, 70 grams including all stones. All of the stones show some abrasion and minor nicks.

Hammer Price: 1,700.00



209 TWO ENGLISH STERLING & CUT CRYSTAL COLOGNE BOTTLES

An English sterling and cut glass cologne bottle with repousse lid and collar, no stopper present, indecipherable city hallmark, date circa 1920s, measures 4.5 x 3 inches. Plus a contemporary Birmingham bottle with hinged repousse lid and sterling collar, glass stopper, date marked 1996, measures 4 x 3 inches. Very good.

Hammer Price: 60.00



210 PAIR 1893 ENGLISH STERLING & GLASS COLOGNE BOTTLES Matched pair of large cologne bottles with hinged sterling lids, sterling collars, pierced shoulders and



Dec. 6, 2014 - Three Centuries of Decorative Arts 12/6/2014

LOT #

base, Hallmarks for England and 1893, maker's mark for William Comyns, measures 6.75 x 3.25 inches. One bottle is missing it's stopper.

Hammer Price: 525.00

211 1901 BIRMINGHAM STERLING & CUT CRYSTAL COLOGNE BOTTLE With repousse sterling lid and collar, cut glass stopper, measures 5.25 x 3.5 inches. The collar has a dent along it's upper edge visible only when the lid is removed. Scattered edge rubs and flakes on the body.

Hammer Price: 85.00

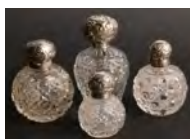


212 TIFFANY & CO. STERLING & GLASS VANITY JARS Tiffany and Co. sterling and glass vanity jar with repousse lid, monogrammed. Plus three more glass vanity jars with sterling lids. Measure from 1.5 to 2.75 inches.

Hammer Price: 110.00



213 FOUR STERLING AND CUT CRYSTAL COLOGNE BOTTLES London cologne bottle with a threaded sterling repousse lid, date mark 1908, measures 4.5 inches, crease in the lid. Birmingham cologne bottle with a threaded sterling repousse lid, date mark 1899, measures 3.75 inches. An English cologne bottle marked 'Hamilton & Co. Calcutta' circa 1900, hinged sterling repousse lid and collar, glass stopper,

**LOT #**

measures 3.5 inches, small edge flakes visible with magnification. Plus a small cut glass cologne bottle with a threaded repousse sterling lid, indecipherable hallmark, measures 2.75 inches.

Condition noted in description.

Hammer Price: 110.00

214 PAIR OF 18TH C. IRISH STERLING ROCOCO SALVERS A large matching pair of footed salvers with pierced, cast and applied borders of ladies heads, bearded figures, grapes and hounds amid ornate rococo swirls, lap jointed construction and hand chased cartouche in the central plates, date marked 1747 and 1748, maker's mark for silversmith John Craig (d. 1783), Dublin hallmarks, no monogram, each measures 3 x 18.5 inches, weights of 115.7 and 122 ozt. Very minor light wear and shallow faint scratches to the central plates, very good overall.

Hammer Price: 9,500.00



215 PAIR OF ENGLISH PLATED COVERED SERVING DISHES

Gadroon edges, unmarked, measures 2.5 x 6 x 4.75 inches. Traces of copper showing through on the insert surfaces.

Hammer Price: 90.00



216 EIGHTEEN-INCH GORHAM STERLING SILVER VASE Measures 18.5 x 9.5 inches, weighs 34.8 ozt. with



Dec. 6, 2014 - Three Centuries of Decorative Arts 12/6/2014

LOT #

weighted base. Good, no major dents and no monograms.

Hammer Price: 650.00

217 STERLING SILVER WATER PITCHER WITH EBONY HANDLE

Marked on the base, measures 8 x 9 x 5.75 inches, weighs 24.2 ozt.

Hammer Price: 375.00



218 SET OF FOUR OLD SHEFFIELD PLATE CANDLESTICKS

Measure 12.25 x 6 inches each. Traces of copper base showing through, very good overall.

Hammer Price: 275.00



219 PAIR OF 1874 GORHAM STERLING SHELL-SHAPED BOWLS

Monograms on the sides, marked on the foot, measure 1 x 4.75 x 2.5 inches, weighs 4.6 ozt.

Hammer Price: 575.00



220 PAIR OLD SHEFFIELD PLATE WARMING ENTRÉE DISHES

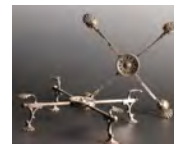
Four piece entrée dishes, removable handles, measure 8 x 13 x 9.5 inches. Very good.

Hammer Price: 325.00

**LOT #**

221 PAIR ISRAEL FREEMAN & SON DISH CROSSES Circa early 20th Century, silver plated, each is marked on the foot, measure 3 x 12 inches.

Hammer Price: 160.00



222 REGENCY OLD SHEFFIELD PLATE WINE COOLER

Circa 1801, marked T & J Creswick, Porter Street, Sheffield, Campana form with a flaring collar, ribbed trim at the shoulder, lion mask terminals at each handle, coined edge at shoulder and on the foot, an engraved crest, measures 11.5 x 12.5 x 10 inches. Very good.

Hammer Price: 600.00



223 247 PCS. WATSON CO. LILY PATTERN STERLING SERVICE

Lot consists of: 12 place spoons, measure 7 inches, weigh 21.55 ozt.; 12 salad forks, 6 inches, 11.5 ozt.; 12 dinner knives, 9.5 inches, all are monogrammed; 12 luncheon knives, 8.75 inches; 12 five o'clock tea spoons, 5.25 inches, 9.75 ozt.; 12 oyster forks, 5.25 inches, 5.45 ozt.; 12 luncheon forks, 7 inches, 20.65 ozt.; 12 dinner forks, 7.5 inches, 26.95 ozt., all are monogrammed; 11 bouillon soup spoons, 5.5 inches, 11.55 ozt.; 12 flat handle butter spreaders, 5.5 inches, 9.8 ozt.; 12 hollow handle butter spreaders, 5.75 inches; 24 teaspoons, measure 5.75 inches, 25.4 ozt., twelve have monograms; 2 soup spoons, 5.5 inches, 1.85 ozt.; 12 demitasse spoons, 4 inches, 4.5 ozt.; 12 parfait spoons, 7



Dec. 6, 2014 - Three Centuries of Decorative Arts 12/6/2014

LOT #

inches, 7.7 ozt.; 12 grapefruit spoons, 5.75 inches, 12.5 ozt.; 2 nut spoons, 4.5 inches, 1.35 ozt.; 2 large pie/cake servers, 10 inches, weighted handles; 2 medium pie/cake servers, 9.5 inches; 2 small pastry servers, 6.25 inches; 2 carving sets, knives measure 14.5 inches, forks 11 inches; 2 tomato servers, 7.5 inches, 4.35 ozt.; a stuffing spoon, no monogram, 12.75 inches, 5.15 ozt.; 2 scalloped serving spoons, 6.25 inches, 2.55 ozt.; a lemon fork, 4.5 inches, .5 ozt.; two olive forks, 5.5 inches, 1 ozt.; 12 serving spoons, 8 inches, 27.25 ozt., six have monograms; 8 serving forks, 8.5 inches, 21 ozt., four are pierced; a cold meat serving fork, 7.5 inches, 1.75 ozt.; 2 sugar tongs, 3.75 x 1.5 inches, 2.05 ozt.; 2 sauce ladles, 5.5 inches, 2.3 ozt.; 2 gravy ladles, 6 inches, 4 ozt.; 5 round casserole spoons, 8.75 inches, 16.75 ozt.; 3 large serving spoons, 8.75 inches, 9.6 ozt.; and a hollow handle cake server, 10.5 x 4 inches. Very good condition. The few pieces that do have a monogram (approximately 53) have a faint Old English style letter C.
Hammer Price: 7,000.00

224 FRANCIS I STERLING SILVER FLATWARE Set of sterling flatware ranging in size from 6 inches in length to 8.25 inches in length and all together weighs 55.25 ozt. Very good condition. No monograms.
Hammer Price: 875.00

**LOT #**

225 ENGLISH SILVER PLATED SOUP TUREEN With a beaded edge and engraved armorial on the side, unmarked, measures 11.25 x 15.5 x 10 inches. Very good.

Hammer Price: 300.00



226 ENGLISH OLD SHEFFIELD PLATE EPERGNE W CUT CRYSTAL Large oval cut crystal center bowl and four small cut glass bowls on removable arms, claw feet, openwork loops, includes an extra side bowl, measures 12.5 x 15.5 x 15.5 inches. Very good.

Hammer Price: 900.00



227 1750 LONDON STERLING SILVER CHAMBER STICK With snuffer, marked on the base, measures 4 x 6.25, weighs 11.3 ozt.

Hammer Price: 160.00



228 OLD SHEFFIELD PLATE REGENCY WINE COOLER Campana form with monogrammed cartouche, lion mask handles with rings, beaded border, melon rib body, circular foot, measures 9.5 x 6.5 inches. Very good condition overall, noting that the cement weight inside the base has dried and is shrunken with age, separating from the inside of the base and loose.

Hammer Price: 475.00



Dec. 6, 2014 - Three Centuries of Decorative Arts 12/6/2014

LOT #

229 FOUR STERLING SILVER SERVING PIECES A Whiting sterling silver punch ladle with a gold wash bowl, a Gorham sterling sauce ladle, an English sterling silver punch ladle and a sterling silver berry spoon with a gold wash bowl, measure from 7 to 13 inches, total weight 16.45 ozt. Very good condition.
Hammer Price: 275.00



230 VARIOUS STERLING SILVER ESTATE OBJECTS Twelve Fisher sterling silver demitasse cup and saucer frames without porcelain inserts, saucers measure 4 inches, cups measure 2.5 inches. Plus an International sterling stemmed goblet in the Lord Saybrook pattern, monogrammed, measures 4.75 inches. And a Mark Scearce Julep cup, measures 3.75 x 3 inches. Total weight 29.25 ozt. Dents on the body of the stemmed goblet.
Hammer Price: 475.00



231 GEORGE JENSEN DANISH STERLING COFFEE SET Set includes a coffee pot, creamer and lidded sugar, each marked under the base, all three are monogrammed on the base 'M.T. McD', creamer measures 3 inches and weighs 4.9 ozt., sugar measures 3.5 inches and weighs 5 ozt., coffee pot measures 7 inches and weighs 14.2 ozt. Very good.
Hammer Price: 2,200.00

**LOT #**

232 ENGLISH TEA & COFFEE SERVICE ON A SHEFFIELD PLATE TRAY Date marks circa 1840, London hallmarks, family crest on the sides, tipping kettle measures 14.5 x 11 x 8.5 inches, weighs 66.5 ozt; coffee pot measures 9.5 x 10 x 6 inches, weighs 37.05 ozt.; teapot measures 5.5 x 11 x 7 inches, weighs 23.5 ozt.; sugar measures 4 x 8.25 x 5.5 inches, weighs 15.05 ozt.; creamer 5 x 4.5 x 3.25 inches, weighs 9.05 ozt.; Old Sheffield plate rectangular tray with a dog's head decoration in the center, measures 3.25 x 27.25 x 18 inches. Dents on the body of the teapot and the tipping kettle.
Hammer Price: 2,400.00



233 FRANCIS I STERLING SILVER COMPOTE Measures 4.5 x 8 inches, and weighs 12.45 ozt. Very good condition. There are no monograms or engraving, and no damage.
Hammer Price: 250.00



234 FRANCIS I STERLING SILVER BOWL Measures 2 x 8 inches, marked sterling and weighs 9.70 ozt. Very good condition. There are no monograms or engraving, and no damage.
Hammer Price: 300.00



Dec. 6, 2014 - Three Centuries of Decorative Arts 12/6/2014

LOT #

235 FRANCIS I STERLING SILVER BOWL Measures 1.5 x 8 inches, marked sterling and weighs 10.05 ozt. Very good condition. There are no monograms or engraving, and no damage.

Hammer Price: 400.00



236 FRANCIS I STERLING SILVER TRAY Measures 11.5 inches in diameter, marked sterling and weighs 18.40 ozt. Very good condition. There are no monograms or engraving, and no damage.

Hammer Price: 375.00



237 FRANCIS I STERLING SILVER 11 INCH BOWL Measures 2.5 x 11.5 inches in diameter, marked sterling and weighs 20.40 ozt. Very good condition. There are no monograms or engraving, and no damage.

Hammer Price: 425.00



239 FRANCIS I STERLING SILVER FLATWARE No monograms. Very good condition, no monograms. Hammer Price: 550.00



240 TIFFANY & CO. 79 PC. AUDUBON PATTERN FLATWARE SERVICE Tiffany & Co. Audubon

**LOT #**

pattern sterling flatware service for twelve with serving pieces. Set includes: twelve 9 inch French hollow knives with bolsters, one 6 inch flat handle butter spreader, twelve 7 inch cream soup spoons, twenty-four 6.25 inch teaspoons with the glossy handles, twelve 7.25 inch dinner forks, twelve 6.75 inch individual salad forks, four 8.5 inch serving tablespoons, one 7.5 inch gravy ladle with a solid handle and one 9 inch serving tablespoon. Total weight 133.65 ozt. excluding the knives. Very good condition, no monograms. This set does not appear to have ever been used.

Hammer Price: 12,000.00

241 PAIR 1801 IRISH LOVING CUPS Hand chased mermaid designs on the bodies, date marked 1801, hallmarks for Dublin, attributed to silversmith Joseph Jackson, measure 8 x 9 x 5 inches each, weigh 23.8 and 24.3 ozt. Shallow dents, lacquered, small areas of discoloration where the lacquer is has lifted.

Hammer Price: 725.00



242 NINE INTERNATIONAL STERLING BREAD PLATES Lord Saybrook pattern, marked on the bases, measure 6 inches each, total weight 26.45 ozt. Utensil marks, very good overall.

Hammer Price: 350.00



Dec. 6, 2014 - Three Centuries of Decorative Arts 12/6/2014

LOT #

243 PAUL STORR GEORGE III STERLING SILVER CRUET SET
Sterling silver and cut crystal and sterling silver with hallmarks for London, 1797, maker's mark for Paul Storr. The measurements are 11.5 x 14 x 7 inches, tray weighs 29.25 ozt. Bottle's feet and stoppers have chips and flakes, one missing stopper.
Hammer Price: 2,100.00



244 A 1930s SILVER PLATED CHILD'S FEEDING TRAY
Mechanically engraved images of fairy tale and African animals, hand engraved dedication 'Calogero 12-14-33', marked Reed & Barton on the base, measures 11.5 x 16.75 inches. One side is slightly warped.
Hammer Price: 110.00



245 CONTINENTAL .800 SILVER ROCOCO BASKET Measures 1.75 x 6.75 inches and weighs 3.40 ozt. Good noting two small breaks in the lattice.
Hammer Price: 100.00



246 1861 LONDON STERLING SILVER CUP A small chased silver footed cup with London Hallmarks for 1861 plus a pair of shell motif sugar nips bearing only rampant lion and maker's mark H.M. The cup measures 4 x 4 inches, and the nips measure 4.5 x 1.75 inches. Together they weigh Good

**LOT #**

noting creased to the foot of the cup.
Hammer Price: 160.00

247 OLD SHEFFIELD PLATE MEAT DOME, DOUBLE LION HEAD HANDLE A fine large dome with ribbed form and an exceptional highly detailed double lion head handle with fleur de lis. No maker's marks found. Measures 12 x 19 x 10.5 inches. Very good condition with no silver wear.
Hammer Price: 1,000.00



248 LARGE SILVER PLATED MEAT DOME ON FOOTED TRAY With engraved crests that differ between cover and base. Measures approximately 15 X 24 X 14 inches. Very good condition with no silver wear.
Hammer Price: 675.00



249 ESTATE LOT OF SHEFFIELD PLATE AND OTHER SILVER Including an unmarked wine coaster, meat dome with dolphin handle, carved crest, and two sunburst marks similar to that of Matthew Boulton. Plus a pair of Sheffield plate candlesticks with pineapple maker's mark. The candle sticks measure 13 inches in height. Coaster measures 5.5 inches in diameter and the meat dome measure 9 x 16 inches. Very good condition throughout.
Hammer Price: 750.00



Dec. 6, 2014 - Three Centuries of Decorative Arts 12/6/2014

LOT #

250 ANTIQUE WALKING STICK
W BLACK FOREST CARVED FOX A

great hat or tack rack fashioned from an antique stag handle walking stick with two hanging rings and hooks. In the center is a brass horseshoe centered by a Black Forest carved fox head previously with glass eyes, only one glass eye remains intact. Great dark patina throughout. Measures 31 inches long with 8.25 x 6.25 inch carving. As shown, chip to the stag handle, apparently missing two brass hooks, glass eye fractured and with losses.

Hammer Price: 275.00



252 17TH CENTURY CARVED
WOOD PADDLE With carved fish.
Measures 47 x 8 inches. Provenance:
Mary Ann Sebree collection. Very good
condition.

Hammer Price: 160.00



253 17TH CENTURY CARVED
WOOD PADDLE With carved bird
motif. Measures 42.25 x 7.75 inches.
Provenance: Mary Ann Sebree
collection. Very good condition.

Hammer Price: 110.00



254 19TH C. PIERCED AND
EMBOSSSED COPPER BED WARMER
Measures 37.5 x 11.5 inches. Original
wood handle, the lid misshapen and
splits near the hinge.

**LOT #**

Hammer Price: 60.00

255 PEKING GLASS BOWLS ON
STAND A pair including the stands
measure 3.5 x 4.5 x 4.5 inches. Very
good condition with no chips, cracks or
repairs.

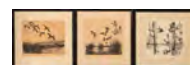
Hammer Price: 90.00



256 RICHARD BISHOP (1887-1975)
PENCIL SIGNED ETCHINGS

Waterfowl etchings titled in pencil lower
left and signed by the artist lower right.
Titles include: 'Safe Return', 'Early
Morning' and 'Mallards'. The image sizes
range from 10.5 x 12 inches, to 10.5 x
14 inches and including the frames range
from 17 x 20 inches, to 17.75 x 20.5
inches. Two are heavily toned. All
appear to be in very good condition,
none were examined outside of the
frame.

Hammer Price: 110.00



257 19TH C. CONTINENTAL
PORCELAIN CABINET CUP &
SAUCER With en grisaille decoration.

Unmarked. Cup measures 3.5 X 4.25
inches including the handle, and the
saucer measure 1.5 x 7 inches in
diameter. Very good condition. There
are no chips, cracks, scratches, repairs or
areas of wear.

Hammer Price: 110.00



Dec. 6, 2014 - Three Centuries of Decorative Arts 12/6/2014

LOT #

258 53 PIECES STEUBEN CRYSTAL STEMWARE WITH ENGRAVED Each piece, including the control bubble port glasses has a six character engraved monogram. Sizes range from 5.75 x 3.5 inches, to 3.75 x 4 inches. Very good condition without chips, cracks or repairs.
Hammer Price: 250.00



259 OLD SHEFFIELD PLATE INK WELL STAND All original with matching bottles and covers and detachable candle holder. Engraved crest. Measures 5 x 11 x 9 inches. Very good, noting loss of plaster under the ink well bezels and therefore loose.
Hammer Price: 50.00



260 EDWARD FRANCIS MCCARTAN (1879-1947) BRONZE SCULPTURE An Art Deco allegory of Diana with incised signature back corner of the base, E. McCartan. Founder's mark of RBW Inc. For Roman Bronze Works. Nice green patina throughout. Measures 23 x 14.5 inches. Very fine condition with only traces of light wear on some high points.
Hammer Price: 3,500.00



261 19TH C. ITALIAN BRONZE FIGURAL GROUP OF THE LAOCOON Signed Chiurazzi Napoli. A lost wax casting after the original work

**LOT #**

of Antiquity which was discovered in 1506. The Naples foundry of Sabatino de Angelis which inscribed their signature as Chiurazzi Napoli, was famous for casting replicas of Antiquities on display in the Naples National Museum. Dark brown to black patina with variegated green on the base. Measures 26 x 19 x 8 inches. Good to very good condition noting small scattered patches of patina loss and minor scratches along with wear to the surface on high points. Good original condition throughout.
Hammer Price: 5,000.00

262 FOUR CARVED WALNUT PLAQUES WITH GAME Carved walnut figures in high relief circa 1880s. Probably elements taken from furniture. Group of four ranging in size from 16 x 8.75 inches, to 16 x 11.25 inches. Very good condition with fine patina, untouched original surface.
Hammer Price: 625.00



263 THREE FINE 19TH CENTURY WALNUT WOOD CARVINGS Three dimensional figures in detail, including a boar and other hanging game with gun, hunting horn and bow with quiver. A grouping of fruit and vegetables with detailed bow and ribbon above. Plus a third carving of framer's arms. Each measures approximately 16 x 6 inches. Good, dark original finish. Some unevenness and light soiling otherwise



Dec. 6, 2014 - Three Centuries of Decorative Arts 12/6/2014

LOT #

very good noting some minor chips.

Hammer Price: 1,350.00

264 CARVED WALNUT PLAQUE WITH WINGED FIGURE High relief carved walnut, measures 18.75 x 13 inches. Minor loss, good old dark surface.

Hammer Price: 225.00



265 THREE LATE 19TH CENTURY WOOD CARVINGS All carved from mahogany. A group of three, including a pair that measure 12.5 x 11.75 inches, plus another piece that measures approximately 6 x 16 x 6 inches. x

Hammer Price: 60.00



266 CIRCA 1900 INLAID TURKISH FOLDING CHAIR A dark open grain hardwood, probably mahogany, originally inlaid with Mother-of-pearl designs. Measures 40.5 x 18.75 x 17 inches. Fair condition noting considerable loss of inlay.

Hammer Price: Not Sold



267 19TH CENTURY FRENCH WALL HANGING PANETTIERE With large iron hinge and forged iron lock, circa early 19th century. Pegged construction and relief carving. Measures

**LOT #**

43 x 30 x 16 inches. Very good original condition noting the addition of a light and a peaked top back side to the cabinet.

Hammer Price: 950.00

268 SMITH'S 3-3/4 INCH TERRESTRIAL POCKET GLOBE TO 1810 Smith's Terrestrial Globe; 'Exhibiting the whole of the Discoveries of the different Circumnavigators to 1810.' Pub.d by C. Smith Strand Oct. 1, 1810. All original with hand colored and engraved gores, mounted on a walnut stand with brass C shape bracket.

Measures approximately 7 x 3.75 inches. The globe itself is in very fine condition. Perhaps varnished at a later date, scattered very, very minor surface rubs and surface scuffs. Paper loss and plaster only at each axis. None of the rubs or scrapes to the papered surface break through to plaster. The walnut base has been broken and poorly repaired where the brass mount is joined.

Hammer Price: 275.00



269 CIRCA 1900 FRENCH BRONZE MOUNTED OPALESCENT LOCKING BOX With high rib glass and gilded bronze mounts. A key is included but is not the correct size. Measures 5.5 x 4 inches. Very good condition.

Hammer Price: 1,500.00



Dec. 6, 2014 - Three Centuries of Decorative Arts 12/6/2014

LOT #**270 TWO GUTTA PERCHA**

IMAGE CASES Including one patriotic motif, which measures 3 x 2.5 inches.

The other piece measures 3.75 x 3.25 inches. The darker patriotic motif good, with bumped corners but has no clasp. The larger example has two small flakes but otherwise crisp.

Hammer Price: 90.00

**271 ROYAL WORCESTER**

DOROTHY DOUGHTY BOB WHITE QUAIL PAIR C209A porcelain pair on wood stands. A singing cock and hen with chicks. Each signed on the base,

created circa 1940 by Dorothy Doughty for Royal Worcester. Two pieces, with the largest bird measuring 7.25 x 6 inches, and the smaller bird measures 5.5 x 6 inches. Each is in very good original condition. There are no chips, cracks or repairs to either figure.

Hammer Price: 4,250.00

**272 TWO GLASS JEWELRY**

CASKETS Including a French, white opaline box with brass mounts and a colorless glass box with bronze mounts and gold tracery. Two pieces with the largest piece that measures 4.25 x 6.25 inches, and the smaller piece measures 3.25 x 3.5 inches. For the smaller opaline example, the glass portion of the hinged cover has come loose from the brass bezel and it appears some lettering has been removed from the covering. The other example is in good condition

**LOT #**

noting wear to the gold tracery on the glass lid.

Hammer Price: 325.00

273 CONTINENTAL PORCELAIN CABINET CUP & SAUCER SET

Cup measures 2.75 x 2.75 inches, and the saucer measures 5.25 inches in diameter.

Very good condition. There are no chips, cracks or repairs.

Hammer Price: 400.00

**274 CONTEMPORARY CUT CRYSTAL NEWEL POST FINIAL**

Measures 8.5 x 4 inches. Very good condition without damage, wear or repair.

Hammer Price: 50.00

**275 TWO CIRCA 1800 PEARLWARE ANIMAL FIGURES**

Ram and goat, plus a Staffordshire castle pastille burner. Three pieces ranging in size from 4.5 x 4 inches, up to 4 x 5.75 inches. A crack to the burner and only minor flakes to the animals with a tight hair line at the front of the ram.

Hammer Price: 350.00

**276 LOUIS VUITTON CANVAS & LEATHER STEAMER TRUNK+B214**

Classic monogram painted canvas with leather and brass trim. Numbered



Dec. 6, 2014 - Three Centuries of Decorative Arts 12/6/2014

LOT #

043461 on the lock plate and marked 'Louis Vuitton' on each lock plate rivet as well as the leather strap guides and paper label inside the lid. Proper markings in all other possible places including the multi compartment interior as shown. Measures 23.25 x 35.5 x 21 inches. Very good condition noting some separations on the lid. Appears to have been varnished some time ago. Complete clean interior and generally intact with no abuse or heavy wear.
Hammer Price: 7,000.00

277 17TH C CARVED AND PAINTED WOOD SAINT FIGURE

Carved wood figure with traces of early colors. Dry wood with insect effects. Measures 20 x 9.75 inches. Good as shown.

Hammer Price: 450.00



278 17TH CENTURY CARVED AND GESSOED WOOD SAINT FIGURE A carved and gessoed wood figure with original gilding and layers of paint. Measures 22.5 x 7 inches. Good as shown

Hammer Price: 575.00



279 18TH CENTURY CARVED AND GESSOED WOOD SAINT FIGURE With glass eyes on a multi-tier base, layers of old paint and good darkened surface. Measures 17 x 9

**LOT #**

inches. Good as shown
Hammer Price: Not Sold

280 19TH C. RUSSIAN ICON WITH CLOISONNE ENAMEL OKLAD Stamped with 84 standard Hallmark and unidentified marker's mark. Measures 10.5 x 8.75 inches. Very good condition.

Hammer Price: 2,000.00



281 19TH CENTURY RUSSIAN ICON WITH CLOISONNE OKLAD

Two-color rise marked 84 standard (some copper shows through silver colored metal marked by this 84 standard). Additional partial maker's name in twelve character Cyrillic lettering only partially visible. Measures 12.5 x 10.25 inches. Very good original condition overall.

Hammer Price: 950.00



282 CIRCA 1800 CARVED HARDWOOD FIGURE OF A CHILD

With traces of green and red color. The figure is mortised into the wood base. Measures 25.5 x 8 inches. Good as shown.

Hammer Price: 575.00



Dec. 6, 2014 - Three Centuries of Decorative Arts 12/6/2014

LOT #

283 19TH C CHINESE
ROSEWOOD TABLE SCREEN
W+B234 PORCEL Open-work carving
of birds and blossoms, three painted
porcelain plaques depicting robed
scholars. Measures 33.25 x 8.5 inches.
Very good original condition, common
age separation at some joints and
corners.

Hammer Price: 1,000.00

**LOT #**

Good condition noting considerable
wear to the fur or hair of the badger.
Hammer Price: 140.00

287 CIRCA 1920 KAZAK
ORIENTAL RUG Measures 67 x 50
inches. Crude reweave and repair in a 6
x 7 inch at one corner plus tears and
holes opposite corner of that same end.
Otherwise good with overall pile with a
small lower area in the middle, no other
damage or repair.

Hammer Price: 525.00



284 19TH CENTURY PAINTED
BRASS REGIMENTAL DRUM Painted
brass body with wood rings and cotton
rope. The Battalion of the Royal Dublin
Fusiliers. The 'the blue caps'. Measures
14.5 x 15 inches. Good intact condition
noting wear and darkening of the painted
surface.

Hammer Price: 500.00



288 FINE LARGE JAPANESE
BRONZE CENSOR Scholar astride a
koi fish. Circa early 20th century.
Measures 13.75 x 15.5 inches. Very
good condition without issue of any kind
including excessive wear.

Hammer Price: 325.00



285 19TH CENTURY BRITISH
REGIMENTAL DRUM Wooden drum
by Besson & Company, London.
Original paint, cords and split head.
Measures 18 x 32 inches. Good original
condition throughout noting normal
effects of age and use .

Hammer Price: 300.00



289 C. 1850 AMERICAN FOLK
ART DRAWING OF A YOUNG MAN
Graphite on paper profile drawing, circa
1850. Information on the reverse states
that the frame was made by the sitter at a
later date. The frame is carved from
walnut two layers deep with chip carving
and painted tack heads. Image size
measures 4.5 x 2 inches, and including
the frame measures 8.25 x 6.25 inches.
Very good original condition.

Hammer Price: 60.00



286 19TH CENTURY BADGER
SPORRAN Brass top frame and red
leather backing with glass eyed badger
head and thistle embossed brass capped
fur tassels. Measures 15.5 x 7.75 inches.



Dec. 6, 2014 - Three Centuries of Decorative Arts 12/6/2014

LOT #**290 CIRCA 1800 MINIATURE PORTRAIT OF A GENTLEMAN**

Currently displayed in a green leathered tool case. Measures 3.5 x 3.25 inches. Very good condition, soiling to the glass, there are no visible splits or repairs. Hammer Price: 425.00

**LOT #****309 CRYSTAL NEWEL POST**

FINIAL Cut and polished glass with brass newel post mount. Measures 6.5 x 3.75 inches. Very good condition. Hammer Price: 100.00

**307 GERMAN CARVED WALNUT CLOCK WITH BAROMETER**

Upper clock movement with porcelain enamel numerals, a central thermometer plus a lower barometer. Measures 34 x 16 inches. Very good original finish and condition. The working condition of the various components is unknown. Hammer Price: 200.00

**310 19TH CENTURY FRENCH BRONZE DORE WINE COOLERS**

Each with Satyr mask handles on a ribbed body with bands of ocean wave motif above encircling acanthus leaves. A pair that measure 8 x 9 inches. Very good condition, each with its original tin liner. Hammer Price: 33,000.00

**308 LOT OF FINE SMALL**

ANTIQUA OBJECTS Including a painted porcelain asparagus form box, a circular French opaline box with swirl pattern and overlaid glass scent bottles with ram's head stoppers. One bottle has damage. Group of four ranging in size from 2.5 in diameter, up to 5.75 x 2.5 inches. A chip at the top of the porcelain box hinged cover and one bottle has damage at the rim and a broken stopper. The opaline box is in good condition and the matching bottle is free from damage. Hammer Price: 225.00



311 PAIR 19TH CENTURY FRENCH TOLE VASES With paw feet and green faux marble base repaint. The upper portion is the original paint. A pair that measure 9 x 5.5 inches each. The bases appear to have been repainted, otherwise good with some scattered losses commensurate with age. Hammer Price: 170.00

**312 19TH C. FRENCH EMPIRE PORCELAIN COLUMN TABLE**

LAMP With hand painted images of the Gods Phaethon, Vulcan, Jupiter and Apollo. A 19th century porcelain column now mounted as a table lamp. Measures 33.5 x 5 inches at the base. Good condition noting heavy wear to the gold decoration. There are no chips, cracks or



Dec. 6, 2014 - Three Centuries of Decorative Arts 12/6/2014

LOT #

repairs.

Hammer Price: 1,800.00

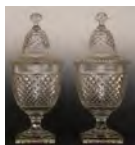
313 PAIR 18TH CENTURY DELFT VASE TABLE LAMPS Yellow delft pottery urns mounted as table lamps. A pair that measure 24.5 x 7.25 inches each. Considerable restoration to the foot of one. Glaze loss and minor restoration to the handles.

Hammer Price: 110.00



314 PAIR OF 21-INCH ANGLO IRISH CRYSTAL CHESTNUT URNS Circa 1900. Wheel cut, waffle and zipper patterns. A pair that each measure 21 x 9 inches. One has minor corner roughness at the base. Otherwise very good without damage or repair.

Hammer Price: 625.00



315 LOT OF 18TH CENTURY DELFT AND OTHER POTTERY A large pair of covered urns, each with considerable damage and repair. A smaller pair of covered urns with minor typical glaze flakes and an early pair of vases with marbled decoration, each missing its cover and with old restoration. Group ranging in size from 6.75 x 3.75 inches, up to 10 x 7.75 inches. Fair to poor condition throughout with damage to all but the smallest pieces.

Hammer Price: 750.00

**LOT #**

316 STERLING HONEY POT, CHILD'S MUG AND SPOON Glass honey pot with a sterling lid with a bee finial and a sterling ladle with a strawberry terminal, hallmarks for R. Blackinton Co., measures 4.5 x 3.5 inches, sterling portions weighs 3.8 ozt. Plus a Peter Rabbit themed child's sterling mug and a Mother Goose spoon, spoon is engraved July 19, 1900, cup measures 2.75 inches, spoon 3.25 inches, weighs 2.75 ozt. together. Child's cup has dents along the sides.

Hammer Price: 275.00



317 PAIR OF FRENCH CUT CRYSTAL BOWLS WITH BRASS MOUNTS Unmarked, measure 3 x 5.75 inches each.

Hammer Price: 225.00



318 PAIR 24-INCH 19TH C. ANGLO IRISH CRYSTAL CHESTNUT URNS A fine large pair of 19th century wheel cut crystal urns. Each decorated with a series of cross-hatch designs, bull's-eyes, zipper band, ribs and feathers. Each measures 24.25 x 9.5 inches. One cover is in very good condition without damage or repair. The other cover has considerable chipping and loss to the finial. One urn is in very good condition without damage or repair. The other urn has a 1 x 1.5 inch area of loss to the zipper cut pattern at the top rim.

Hammer Price: 750.00



Dec. 6, 2014 - Three Centuries of Decorative Arts 12/6/2014

LOT #

319 FRENCH TOLE PAINTED SIGN DATED 1857 Period date and inscription on the reverse. Measures 18.75 x 23 inches. Good as shown, all original without any touch-up or repaint. Good color.
Hammer Price: 150.00

**LOT #**

323 SEVEN VINTAGE CROQUET BALLS Group of seven pieces each measuring approximately 3.5 inches in diameter. Wear and minor paint loss.
Hammer Price: 15.00



320 EARLY 19TH C FRENCH PROVINCIAL CARVED WOOD BOX A wall hanging box with sliding front and dovetailed construction. Nice relief carving and great patina to the French walnut. Measures 17.75 x 8.5 inches. Very good condition.
Hammer Price: 250.00



324 SEMI-PRECIOUS STONE TREE PAIR IN LACQUER PLANTERS A pair that measure approximately 16.5 x 12 x 5.25 inches each. Breaks and soiling throughout.
Hammer Price: 180.00



321 19TH C PROVINCIAL WALL BOX With relief carved door over drawer. At one time the with top with Fleur de Lis was hinged. Nice dark patina. Measures 17 x 11 inches. Good as noted.
Hammer Price: 275.00



325 BRASS ALTAR STICK LAMP Measures 29.5 x 10.5 inches from the shade. Good condition.
Hammer Price: 35.00



322 VIENNA BRONZE GROUPING OF FISH ON OAK PLAQUE C.1900 C245 Measures 10.5 x 7.75 inches. Some spotting to the oak finish plus wear and unevenness to the color of the metal portions.
Hammer Price: 125.00



326 19TH C. ENGRAVED WOOD WALL MOUNT SPILL HOLDER Nice patina. Measures 11.25 x 4.25 inches. Very good condition.
Hammer Price: 35.00



327 17TH C. CARVED WOOD CANDLE BOX A wall hanging candle box with relief carved designs and an incredible old surface. Constructed with early forged nails. Measures 12.25 x 5.75 inches. Good condition.
Hammer Price: 70.00



Dec. 6, 2014 - Three Centuries of Decorative Arts 12/6/2014

LOT #

328 EARLY 19TH C CHASED
COPPER JARDINIÃˆRE Measures
12.25 x 13 inches in diameter. Corrosion
and dents from considerable use.
Hammer Price: 60.00



329 SMALL IRON FIRE BACK
WITH EAGLES A depiction of Rebecca
at the well in relief. Good
Hammer Price: 60.00



330 CIRCA 1900 HUNTING
HORNS A brass Bicycle Bugle, London.
Plus a small copper and brass horn. Two
pieces, with one smaller in size that
measures 6 x 5.5 inches, and the larger
piece measures 5.5 x 8.5 inches.
Scattered dents
Hammer Price: 170.00



331 PEWTER COVERED DISH W
ACANTHUS FINIAL CIRCA 1800
Measures approximately 7 x 14 inches in
diameter. The base has worn through.
Hammer Price: 35.00



332 COPPER & OAK PLAQUE
MADE FROM HMS FOUDROYANT
The HMS Foudroyant was built in the
Plymouth dockyard and launched in
1798. It served as Nelson's flagship for a
time and was an 80-gun third rate of the
Royal Navy. It wrecked in 1897 and a

**LOT #**

variety of relics were made from its
salvage, including this copper repousse
plaque mounted on oak. Oak lumber and
tons of copper were salvaged from the
HMS Foudroyant and many
commemorative items like this were
created from that salvage. Measures 15.5
x 11.25 inches. Very good condition.
Hammer Price: 120.00

333 19TH C. ORNAMENTAL
WROUGHT IRON WITH FLEUR DE
LIS Measures 9.25 x 12 inches. Good
Hammer Price: 20.00



334 BUDDHIST TIBETAN
NEPALESE KAPALA WITH METAL
MOUNTS Measures approximately 10 x
20 inches span of the horns. Good
Hammer Price: 450.00



335 TWO PIECES 19TH CENTURY
BRASS . Good condition noting the
effects of age and use.
Hammer Price: 30.00



336 CIRCA 1800 EUROPEAN
PAINTED CHEST With dovetailed
corners and forged iron strap hinges.
Original forged iron lock and nice old
original paint. Measures 26 inches high
by 22 inches wide and 8.5 inches at the
base. Good noting the effects of age and



Dec. 6, 2014 - Three Centuries of Decorative Arts 12/6/2014

LOT #

use.

337 19TH CENTURY TIGER
MAPLE BOX With divided interior.
Measures 5.75 x 10.25 x 5.5 inches.
Some loose elements and flaking finish
on the lid.
Hammer Price: 150.00



338 19TH C. FRENCH EMPIRE
MARBLE PORTICO CLOCK With
gilded bronze mounts. Measures 15.75 x
8.5 x 4.5 inches. Good running
condition, the time keeping capabilities
are unknown.
Hammer Price: 275.00



339 PAIR CIRCA 1810
PEARLWARE FIGURES The woman
holding a sheep's foot. Two pieces each
measuring approximately 7.75 x 4 x 4
inches. Very good noting a few minor
edge flakes.
Hammer Price: 750.00



340 PAIR CIRCA 1810
PEARLWARE FIGURES Two pieces
including one with man and woman that
measures 6.5 x 4.75 inches, and another
with a woman that measures 6 x 4 x 3
inches. A break to the woman's pump
handle.
Hammer Price: 1,100.00

**LOT #**

341 PAIR CIRCA 1810
PEARLWARE FIGURES A blue mark
under the base of the figure with
children. Two pieces, one with a man
that measures 6.75 x 3.5 inches, and the
other measures 6 x 4 inches. A few tiny
minor chips and something missing from
the gentleman's hand, possibly something
missing from the little boys hand.
Hammer Price: 450.00



342 PAIR CIRCA 1810
PEARLWARE FIGURES Repair to the
boy's hat. Includes two piece each
measuring approximately 6.5 x 3 inches.
Repair and minor roughness.
Hammer Price: 100.00



344 FRAMED COLLECTION OF
PLASTER INTAGLIOS Includes two
pieces, each measuring 9.25 x 11.75
inches with the frame. Some minor
chipping to the frames.
Hammer Price: 90.00



345 GUTTA PERCHA 1/4 PLATE
IMAGE CASE Measures 6.25 x 5
inches. A chip along the hinged side and
some blunting on the corners.
Hammer Price: 60.00



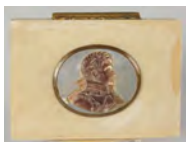
Dec. 6, 2014 - Three Centuries of Decorative Arts 12/6/2014

LOT #

346 19TH C. BURL WOOD BOX WITH MINIATURE PAINTING A fine burl wood box with miniature painting under glass. Measures 1.25 x 4 inches in diameter. Excellent condition without damage, wear or repair.
Hammer Price: 190.00



347 FINE 19TH CENTURY IVORY BOX WITH ABALONE CAMEO Measures approximately 1 x 3.5 x 2.5 inches. Very good condition.
Hammer Price: 100.00



348 EARLY 19TH CENTURY ENAMEL PATCH BOX Measures 1 x 2.5 x 1.75 inches. Very good condition without damage or repair of any type.
Hammer Price: 110.00



349 FRENCH BRONZE MOUNTED OPALINE JARDINIERE With paw feet and tassels at each corner. Measures 6.25 x 6.25 x 6.25 inches. Very good condition without wear, damage or repair.
Hammer Price: 775.00



350 CIRCA 1900 BRASS CLOCK SET FOR TIFFANY & CO. With the Tiffany & Company retailer's mark on the dial and on the movement. The movement is further marked by the

**LOT #**

maker, Japy-Freres. The clock measures 14.5 x 9 x 4.25 inches, with the candelabra set measuring 11.25 x 7 x 3.5 inches each. Very good complete running condition. The porcelain enamel dial is in excellent condition without chips, cracks or repair.
Hammer Price: 375.00

351 PAIR EARLY 19TH CENTURY DELFT APOTHECARY JARS Unmarked. A pair that measure 7.5 x 4 inches in diameter. No major damage. There are the typical glaze lines and glaze flaking conditions. Each finial has been broken and repaired and one has 25% glaze and surface loss. Otherwise minor glaze loss and surface hairlines as are typically found.
Hammer Price: 160.00



352 EARLY 20TH CENTURY MICROMOSAIC CROSS Depicting various traditional Italian micro mosaic motifs. The central Stanhope is missing. Measures 7 x 3.75 inches. One row of approximately twelve tesserae is missing and the Stanhope is absent. Otherwise, very good.
Hammer Price: 225.00



353 STEUBEN CRYSTAL PITCHER & B273 CONTROL BUBBLE MARTI Each signed on the base. The pitcher measures 10 x 4.5



Dec. 6, 2014 - Three Centuries of Decorative Arts 12/6/2014

LOT #

inches including the handle, and the martini glass measures 4 x 3.5 inches. Very good condition. There are no chips, cracks or repairs.
Hammer Price: 80.00

354 STEUBEN ENGRAVED CRYSTAL COCKTAIL SHAKER An 8.5 inch shaker with goose in flight, plus a second shaker without engraved decoration measures 6.5 x 3.5 inches. Each has a control bubble stopper and is signed on the base. Very good condition. There are no chips, cracks, scratches, repairs or wear.
Hammer Price: 150.00



355 18TH CENTURY CONTINENTAL SACRISTY CABINET A rectangular cabinet with concave central area and figural carved pilasters flanking the center door with cut openwork and embossed iron grill; scroll cut legs and conforming concave rectangular base. Measures 59 x 24.5 x 13.5 inches. Some insect effects, heavy wear and aged dry rot to the lowest portions of the base.
Hammer Price: 350.00



356 CIRCA 1900 GOTHIC CHANDELIER A spelter frame with flat panels of variegated slag glass and a gilded wood framed bottom glass. Measures approximately 42 x 18 inches.

**LOT #**

Very good, probably and old re-paint. The wooden frame is dry and flaking.
Hammer Price: Not Sold

357 JOHN FREDERICK TAYLER (1802-1889) WATERCOLOR ON PAPER C279 Titled 'A Hawking Party' by an old gallery tag on the reverse; initialed and dated 1879 lower left, sight size 3.25 x 6.5 inches, frame measures 9.25 x 12.25 inches. Very good, clean, no visible stain, damage or repair. Not examined outside the frame.
Hammer Price: 200.00



358 LARGE CARVED AND GILDED WOOD VENETIAN MIRROR Carved and gessoed wood rococo swirls. Circa 1900. Overall measurements of 40 x 33.5 inches. Sturdy, intact and good noting the lifting, flaking and loss of some gesso and gilding.
Hammer Price: 375.00



359 18TH CENTURY GILT FRAME MIRROR Foliate designs and shell corners. Original wood backing. Measures 33.75 x 27 inches. Good noting the common effects of age.
Hammer Price: 200.00



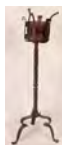
Dec. 6, 2014 - Three Centuries of Decorative Arts 12/6/2014

LOT #

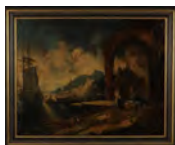
360 EARLY 20TH C. CARVED WOOD MIRROR W DRAPE & PLUMES Measures 49.25 x 38 inches. Very good.
Hammer Price: 120.00



361 18TH CENTURY FORGED IRON CRESSET ON STAND Various forged detail, traces of color. Measures 47 x 10 inches. Very good.
Hammer Price: 50.00



363 19TH C. ITALIAN SCHOOL HARBOR SCENE OIL ON CANVAS Unsigned, canvas measures 28.75 x 36.5 inches, frame measures 33.5 x 41.5 inches. Repairs and a long line of in painting left side.
Hammer Price: 250.00



364 SET OF EIGHT SABINO FRENCH OPALESCENT KNIFE RESTS Figural duck ends, signed under the base of each, 1 x 4 inches each. Very good condition. There are no chips, cracks or repairs.
Hammer Price: 80.00



365 JOSEPH GAYRARD (1807 - 1855) BRONZE FIGURE OF DOG Joseph Paul Raymond Gayrard (French, 1807-1855) bronze figure of a Wolfhound or Borzoi. Incised signature

**LOT #**

of Gayrard, measures 3.25 x 8 x 4.5 inches. Very good.
Hammer Price: Not Sold

366 EARLY 19TH CENTURY INLAID MINIATURE CHEST Measures 14 x 22 x 12 inches. Very good noting minor wear and stress marks.
Hammer Price: 425.00



367 18TH C. LEATHER BOX W GEORGE REX & CROWN MONOGRAM Leather covered wood, interesting forged hinges, debossed monogram of GR with crown for the king George Rex. Measures 9.5 x 21 x 12. Considerable losses, replaced lock, insect damage to the wood frame under the leather.
Hammer Price: Not Sold



368 REVERSE ON CONVEX GLASS HUNTING SCENE CHROMOLITHOGRAPH Measures 16 x 19 inches overall. Very good, no damage, stain or repair.
Hammer Price: 90.00



369 PAIR 19TH C. FRENCH PATE SUR PATE LAMPS Each measures 32 inches high including finial, 16 inches to the top of the porcelain. Very good



Dec. 6, 2014 - Three Centuries of Decorative Arts 12/6/2014

LOT #

condition. There are no chips, cracks or repairs.

Hammer Price: 40.00

370 19TH C. SCROLL CUT
FRETWORK CHURCH TOWER
CLOCK CASE C314 Measures 41 x
21.5 x 11 inches. Chips, losses, breaks
and repairs.

Hammer Price: Not Sold

**LOT #**

376 18TH C. FRENCH BRETON
CABINET TOP Measures 48.75 x 55.75
x 15.25 inches. Good condition.

Hammer Price: 190.00



377 17TH/18TH CENTURY
CARVED WOOD COLUMN
FRAGMENT Measures 38.5 x 12 x
12.25 inches. As shown.

Hammer Price: 25.00



371 TWO 18TH CENTURY
GREASE LAMPS Two pieces that
measure 5 x 4.75 and 4.75 x 4.25 inches.
Good condition.

Hammer Price: Not Sold



378 EARLY 19TH C. OAK LOW
BOY Measures 30 x 32.25 x 18.5
inches. Good condition.

Hammer Price: 70.00



372 18TH CENTURY TIN
IPSWICH TYPE LAMP Measures 7
inches high. Good condition.

Hammer Price: 140.00



379 FRENCH WOOD CARVED
AND LETTERED BRITTANY CREST
A carved and painted café sign circa 2nd
quarter of the 20th century. Measures 46
x 30 inches. Good, original, minor
losses.

Hammer Price: 110.00



373 UNUSUAL 18TH CENTURY
IRON GREASE LAMP Measures 17 x
8 inches. Good condition.

Hammer Price: 120.00



380 18TH CENTURY IRON
GREASE LAMPS Group ranging in size
from 2 x 6.25 x 3.25 inches, to 5.5 x 6 x
3.25 inches. Good condition.

Hammer Price: Not Sold



374 TWO 18TH CENTURY
GREASE LAMPS Two lamps that
measure 6 x 4.5 x 2.75 and 4 x 3.25 x
4.5 inches. Good condition.

Hammer Price: 30.00



Dec. 6, 2014 - Three Centuries of Decorative Arts 12/6/2014

LOT #

381 19TH CENTURY TIN
PUSH-UP CANDLE STICK Measures
14.25 x 6 inches. Good condition.
Hammer Price: 140.00



382 19TH C. CONTINENTAL
CARVED FIGURAL WALL SHELF
Measures 12 inches high by 12 inches
wide and 7.5 inches deep. Good
condition.
Hammer Price: 50.00



383 19TH C. FRENCH FEUR DE
LIS REDWARE FOOD MOLD
Measures 11 x 10 inches.
Hammer Price: 50.00



384 CARVED WOOD FIGURE OF
BUDDHA Relief carved figure with
color. Measures approximately 8 x 4
inches. Good condition.
Hammer Price: 70.00



385 TWO ANTIQUE COPPER
FOOD MOLDS Two different molds.
Hammer Price: 275.00



386 CHARLES FIELD HAVILAND
OYSTER PLATES Group of four each
measuring approximately 8.75 inches in
diameter. Good condition. There are no
chips, cracks or repairs.

**LOT #**

Hammer Price: 80.00

387 THREE ANTIQUE COPPER
FOOD MOLDS The circular pan has
dovetailed construction, the taller has
Birmingham hallmarks. Three pieces
ranging in size from 3 x 3.25 inches, up
to 2.75 x 9.25 inches. Good condition.
Hammer Price: Not Sold



388 LOT OF 1862 MISSOURI
CURRENCY Measures 4 x 7.75 inches.
Tattered condition, no major tears, no
repair.
Hammer Price: 80.00



389 TWO ANTIQUE COPPER
HUNTING HORNS Two pieces, with
one slightly smaller that measures 9 x 1.5
inches and the larger piece measures
9.75 x 2 inches. Minor dents, intact.
Hammer Price: 100.00



390 BRASS AND COPPER
ANTIQUHUNTING HORNS Two
pieces, with one smaller in size that
measures 8.75 x 1.75 inches, and the
larger piece measures 7.5 x 10.25 inches.
Minor dents, intact.
Hammer Price: 90.00



Dec. 6, 2014 - Three Centuries of Decorative Arts 12/6/2014

LOT #**391 NEEDLEPOINT BELL PULL AND SILK EMBROIDERED PANELS**

The bell pull is late 19th century, the silk embroidered pieces are may date to the early 19th century. They measures from 35 x 3.25 inches and 78.5 x 4 inches.

Hammer Price: Not Sold

**LOT #**

Hammer Price: 35.00

396 LOT OF ANTIQUE COPPER COOK WARE Group ranging from 4 x 16.5 x 8.25 inches down to 3.5 x 10 x 5.25 inches. Good condition.

Hammer Price: 45.00

**392 TWO ANTIQUE COPPER FOOD MOLDS** A pair that measure 7.5 x 6.25 inches each.

Hammer Price: 350.00

**397 CIRCA 1900 OCTAGONAL BLACK LACQUER CONCERTINA** Black lacquer finish with detail. Good playing condition, no maker's markings found. Very good condition.

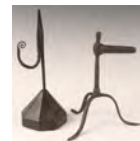
Hammer Price: 450.00

**393 19TH C. CONTINETAL KINDLING BOX** Measures 32 x 8.5 x 7 inches.

Hammer Price: 100.00

**398 FORGED IRON RUSH LIGHT HOLDER AND OTHER EARLY LIGHTING** Included two pieces, with one slightly taller that measures 10 x 4 inches, and the other measures 8 x 7 inches. Good condition.

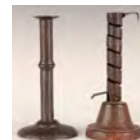
Hammer Price: 250.00

**394 FRENCH REDWARE POTTERY CONFIT JAR A** two-handed confit jar plus a glazed urn with handles and spigot. Two pieces, with the smaller piece measuring 12 x 8.5 inches and the larger piece measures 13 x 9 inches. No major damage or repair. The effects of age and use, the urn is probably missing its cover.

Hammer Price: 30.00

**399 COLLECTION OF ANTIQUE KEYS** Measures 5.5 to 7 inches. Good condition.

Hammer Price: 45.00

**395 COUESNON PARIS BRASS FRENCH HORN CIRCA 1900 AS-IS** Measures approximately 26 x 18 inches. Dents and missing parts.**400 TWO 18TH CENTURY IRON CANDLESTICKS** Two pieces each measuring approximately 8 inches in height. Good condition.

Dec. 6, 2014 - Three Centuries of Decorative Arts 12/6/2014

LOT #

Hammer Price: 70.00

401 LARGE CIRCA 1900
EMBOSSSED BRASS ALTAR STICK
Measures 34 x 11 inches. Good
condition.



Hammer Price: 70.00

402 18TH AND 19TH CENTURY
TEXTILES A sash that measures 41 x 8
inches and another measuring 28.5 x 21
inches. Fair as shown.



Hammer Price: Not Sold

404 18TH C. CONTINENTAL
PAINTING OF THE CHRIST CHILD
Painted on a canvas, Latin verse.
Measures 8 x 6 inches. Good as shown.
Hammer Price: 120.00



405 19TH CENTURY BRASS
DIPPER WITH FORGED IRON
HANDLE Measures 26 inches long.
Good condition.
Hammer Price: 35.00



406 TWO TIER OAK SHELF
DISPLAY Measures 17.5 x 51 x 16.5
inches. Good condition.
Hammer Price: 150.00

**LOT #**

407 VICTORIAN WIRE MESH
SANTA CLAUS MASK Measures 19 x
9 inches overall. Good, noting some very
separation.



Hammer Price: 80.00

408 C. 1800 FRENCH SCHOOL
PASTORAL SCENE OIL ON
CANVAS Canvas measures 17.5 x 24
inches, frame measures 23.5 x 29.75
inches. Canvas has been relined, light
crazing and toning, repaired tears on the
upper left.



Hammer Price: 600.00

409 GERMAN EMBOSSED IRON
MARQUEE SIGN Measures
approximately 19 x 40 inches. Good
condition.



Hammer Price: Not Sold

410 19TH C CAST IRON BOOT
SCRAPER Measures 11 high by 15 wide
and 11 inches deep. Good condition.
Hammer Price: Not Sold



411 19TH C. CONTINENTAL
FRUIT WOOD ONE DRAWER
STAND Measures 26.5 x 31.75 x 18.5
inches. Good.



Hammer Price: 100.00

Dec. 6, 2014 - Three Centuries of Decorative Arts 12/6/2014

LOT #

412 PAIR EARLY 19TH C. BRASS PRICKET CANDLESTICKS Each measures approximately 20 inches high. Good condition.
Hammer Price: 100.00



413 EMBOSSED BRASS FLOOR LAMP Measures approximately 60 x 18 inches with the shade. Good condition.
Hammer Price: 35.00



414 19TH CENTURY EMBOSSED COPPER BASIN Measures 6.25 high and 19 x 17 inches oval. Some small holes and minor dents. Good original patina.
Hammer Price: 160.00



415 EARLY 20TH C. FIRE SCREEN WITH HERALDIC MOTIF Wood form covered with red cloth and mounted with spelter decoration and brass tack heads. Measures 36 x 40 inches. Minor fading, abrasions, and nicely rubbed and faded spelter mounts. No damage or repair.
Hammer Price: 70.00



416 19TH CENTURY CHINESE GARDEN SEAT Measures 19 x 10 inches. Very good. There are no chips, cracks or repairs.
Hammer Price: 350.00

**LOT #**

417 18TH CENTURY HIDE COVERED TRUNK Measures 11 inches high by 24 inches and 14 inches deep. Detached hinges, covering loss, lost elements. Wear commensurate with age.
Hammer Price: Not Sold



418 PAIR OF 19TH C. KOREAN PERSIMMON WOOD CHESTS Two matching chests that each measure approximately 24.5 x 30.25 x 12.75 inches. Very good condition. Nice dark, warm patina. Intact and original without damage or repair.
Hammer Price: 400.00



419 19TH C. LEATHER GUN CASE WITH BRASS LOCK Measures 33 inches long, 5.5 inches high, and 7 inches deep. Very good, good color and patina.
Hammer Price: 80.00



420 EARLY 20TH C. CARVED AND GESSOED ALTAR STICK Original cream and gold paint. Measures 33.5 x 6 inches. Good noting some surface loss and discoloration. No major damage, no repair.
Hammer Price: 35.00



Dec. 6, 2014 - Three Centuries of Decorative Arts 12/6/2014

LOT #

421 19TH C. CONTINENTAL
PEWTER LAVABO A Continental
maker's touch mark with eagle.

Measures 24 x 13.75 x 13.75 inches.

Good condition.

Hammer Price: Not Sold

**LOT #**

condition.

Hammer Price: 120.00

422 19TH C. BRITISH SCHOOL OIL
ON PANEL PORTRAIT OF A LADY

Unsigned. Panel measures 14 x 11

inches, frame measures 21.5 x 20 inches.

Good condition.

Hammer Price: Not Sold



426 KARL KAUFMANN (a.k.a. L.
BERTINI, 1843-1902/05) OIL ON
PANEL Signed 'L. Bertini' lower left,
wooden panel measures 10.5 x 8.25

inches, frame measures 17.5 x 15.5

inches. Good condition.

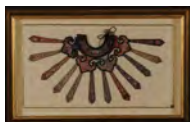
Hammer Price: 350.00



423 CHINESE EMBROIDERED
SILK WEDDING COLLAR

Approximately 13 x 24 inches, shadow
box frame measures 21 x 33 inches. Very
good intact condition.

Hammer Price: 50.00



427 19TH C. BRITISH SCHOOL
OIL PANEL IMAGE OF A CHILD

Early 19th century, unsigned, panel
measures 6.5 x 4.75 inches, original
Birdseye Maple frame measures 9.5 x
7.75 inches. Good condition.

Hammer Price: 150.00



424 20TH C. AMERICAN STILL
LIFE SIGNED 'SEWELL' An oil on
panel signed lower right, panel measures
20 x 28 inches, frame measures 23.5 x
31.75 inches. Good condition.

Hammer Price: 150.00



428 19TH C. PORTRAIT OF A
GENTLEMAN, OIL ON BOARD

Unsigned, excessive warping of the panel
which measures 24 x 18.75 inches, frame
measures 26 x 21.75 inches. Appears to
have been cleaned, good condition
noting the warping of the panel.

Hammer Price: 120.00



425 JAMES L FITZGIBBON
(1864-1929) WATERCOLOR ON
PAPER Landscape estate signed lower
left, sight size 8.5 x 11.25 inches, frame
measures 18 x 20.25 inches. Good



429 ATTRIB. SALOMON
JAROSLAWSKI (1793-1866) OIL ON
CANVAS Unsigned portrait of a
gentleman, attributed to the artist with
label on the reverse, canvas measures



Dec. 6, 2014 - Three Centuries of Decorative Arts 12/6/2014

LOT #

25.5 x 22.75 inches, frame measures 30 x 27 inches. Puncture lower left quadrant.

Hammer Price: 70.00

430 19TH C. OIL ON CANVAS STILL LIFE Signed 'H. Schlüter' lower left, canvas measures 19.5 x 24 inches, frame measures 25 x 29.75 inches. Tear upper left quadrant, scattered losses.

Hammer Price: 90.00



431 PAIR OF 18TH C. FRENCH WOOD ENGRAVINGS Plate sizes 22.25 x 16.25 and 22.5 x 16.5 inches, frames measure 28.5 x 22 inches each.

Hammer Price: 130.00



432 TWO STERLING SILVER FLATWARE SERVING PIECES A pierced server 7.25 x 3 inches that weighs 2 ounces troy and a 9 x 3 inch serving piece with serrated edge weighs 2.75 ounces troy. Good condition.

Hammer Price: 160.00



433 CIRCA 1900 RED LACQUER ASIAN TEA CHEST Measures 11.25 x 25.5 x 16 inches overall. Good condition.

Hammer Price: 30.00

**LOT #**

434 19TH CENTURY OIL ON CANVAS PORTRAIT OF A MAN Unsigned. The painting itself measures 40 x 30 inches. Good condition.

Hammer Price: 40.00



435 19TH C. PORTRAIT OF A SOLDIER OIL ON CANVAS Vignette frame, 18th century style, 'Russell' inscribed in pencil on the stretcher. The canvas measures 20 x 16 inches, frame measures 28 x 25 inches. Good condition without visible damage or repair.

Hammer Price: 200.00

